



Lapwing. Spring. 2nd year. Male (01-III).

NORTHERN LAPWING (*Vanellus vanellus*)

IDENTIFICATION

30-31 cm. Dark upperpart, with glossy green colour; white underparts; broad and rounded wings, with dark flight feathers; white tail with black terminal band; long crest; reddish undertail coverts; in **breeding** plumage **male** with black throat and breast; **female** similar to **male** but with white feathers admixed on black breast and throat; in **winter** plumage both sexes with white throat.



Lapwing. Pattern of head and tail

SIMILAR SPECIES

This species is unmistakable.

SEXING

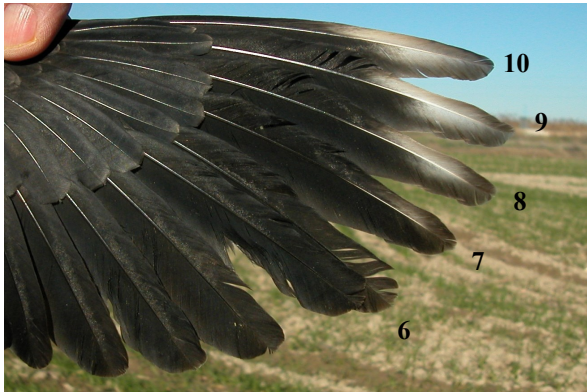
In **adult** birds, **male** has a crest longer than 87 mm; length of 10th primary is between 3rd and 5th; 10th primary is black and its dark tip is not reaching black base; outermost four primaries with pale patch; bluish lesser wing coverts. **Female** has a crest between 60-75 mm; length of 10th primary is between 6th and 7th; 10th primary is black-brown and its dark tip is reaching dark base; outermost three primaries with pale patch; green bluish lesser wing coverts.

In **1st/2nd year** birds, before their **prebreeding** moult, **male** has a crest longer than 70 mm; length of 10th primary is between 6th and 7th; 10th primary is black-brownish and its dark tip is reaching black base with a very pale line. **Female** has a crest between 40-60 mm; length of 10th primary is between 7th and 9th; 10th primary is dark brown and its dark tip is reaching dark base with a dark line.

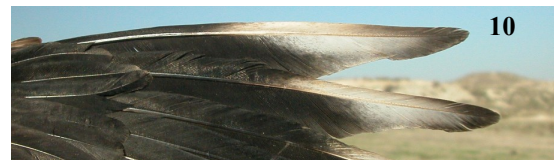


Lapwing. Sexing. Length of crest: top male; bottom female

04930 Northern Lapwing (*Vanellus vanellus*)



Lapwing. Adult. Sexing. Pattern of 10th primary: top male; bottom female.



Lapwing. Adult. Sexing. Wing formula: top male; bottom female.

Lapwing. 1st year. Sexing. Pattern of 10th primary: top male; bottom female.



Lapwing. 1st year. Sexing. Wing formula: top male; bottom female.

Lapwing. Adult. Sexing. Pattern of lesser coverts: top male; bottom female.

04930 Northern Lapwing (*Vanellus vanellus*)



Lapwing. 1st year. Sexing. Pattern of lesser coverts: top male; bottom female.

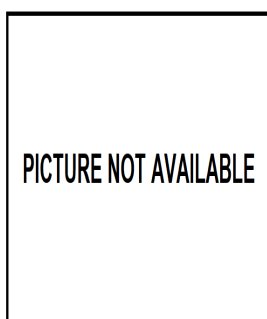
AGEING

3 types of age can be recognized:

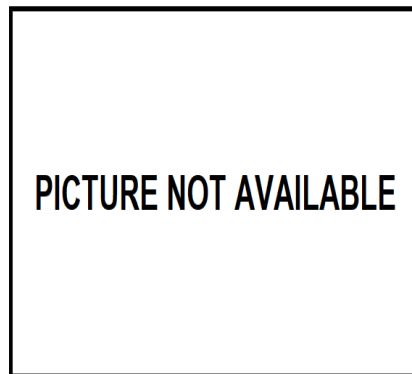
Juvenile with feathers with large buff edge (no only on tip) on upperparts and wing coverts; short crest feathers; fresh plumage.

1st year autumn/2nd year spring similar to adults but ageing is possible using characters given in **SEXING**; usually have the outermost tail feather white or with some black on inner web.

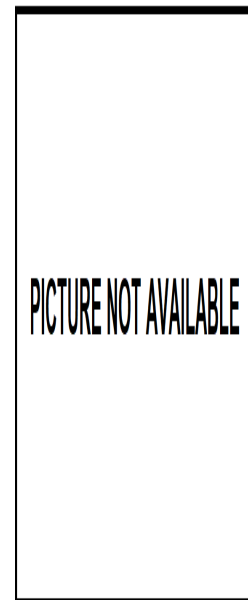
Adult with body feathers and wing coverts with brown tip in autumn, missing during winter by wear; long crest feathers; the outermost tail feather with dark patches on both webs (**CAUTION**: pattern of outermost tail feathers is highly variable in both types of age); birds with arrested moult and finished in wintering quarters have two generations of feathers.



Lapwing. Ageing. Pattern of breast: left adult; right juvenile.



Lapwing. Ageing. Pattern of head: top adult; bottom juvenile.



Lapwing. Ageing. Pattern of upperparts: left adult; right juvenile.

MOULT

Complete **postbreeding** moult, with a large period between April and October; occasionally moult of secondaries arrested. Partial **postjuvenile** moult involving body feathers, some inner secondaries and tail feathers and usually all or most of wing coverts; usually finished in November. Both age classes have a **prebreeding** moult including body feathers and occasionally some wing coverts and tertials.

PHENOLOGY

| | | | | | | | | | | | |
|---|----|-----|----|---|----|-----|------|----|---|----|-----|
| I | II | III | IV | V | VI | VII | VIII | IX | X | XI | XII |
| | | | | | | | | | | | |

- Summer visitor ■ Resident
- Wintering ■ On passage



Lapwing. Spring. Adult. Male ().



Lapwing. Spring. Adult. Female ().

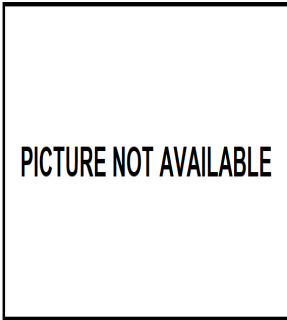


Lapwing. Spring. 2nd year. Female ().

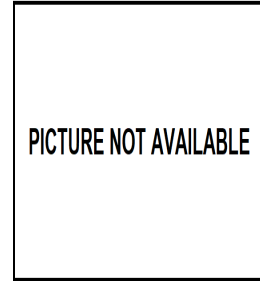
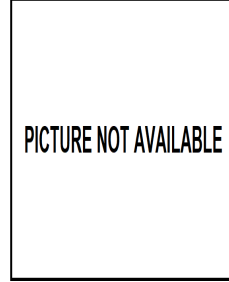


Lapwing. Spring. Juvenile ().

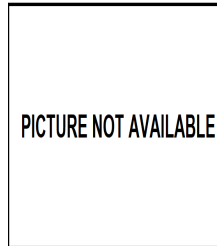
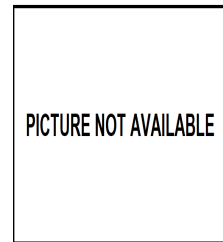
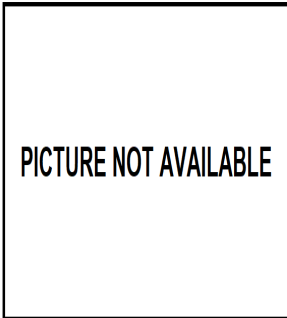
04930 Northern Lapwing (*Vanellus vanellus*)



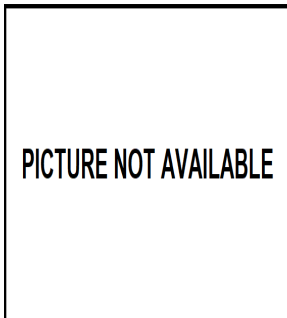
Lapwing. Spring. Adult. Head pattern: top male (); bottom female ().



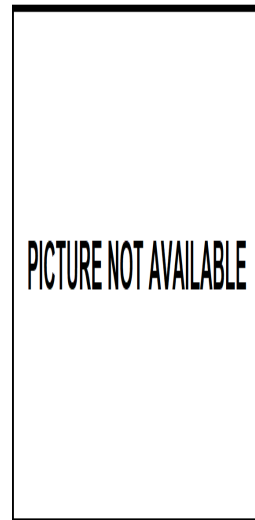
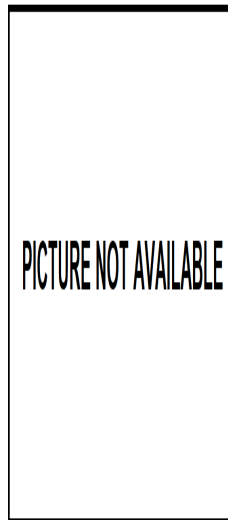
Lapwing. Spring. Adult. Breast pattern: left male (); right female ().



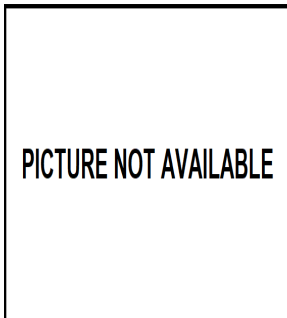
Lapwing. Spring. Breast pattern: top 2nd year male (01-III); middle 2nd year female; bottom juvenile ().



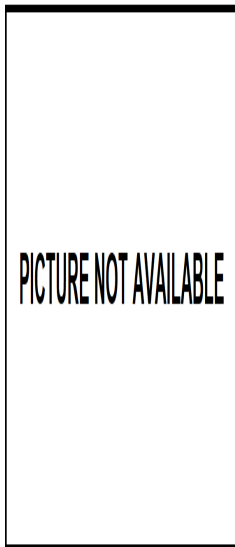
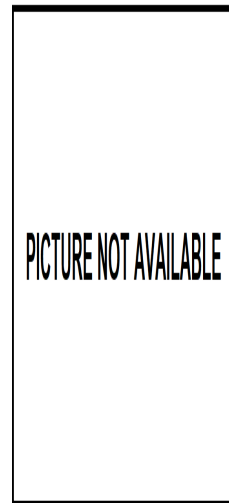
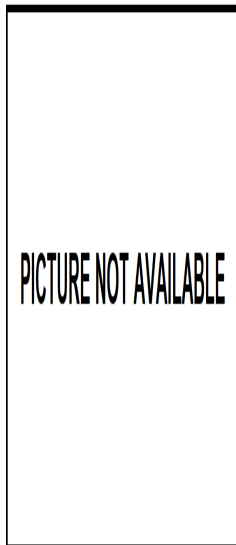
Lapwing. Spring. Head pattern: top 2nd year male (01-III); middle 2nd year female; bottom juvenile ().



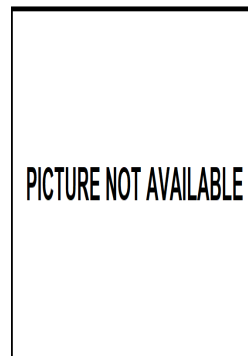
Lapwing. Spring. Adult. Upperpart pattern: left male (); right female ().



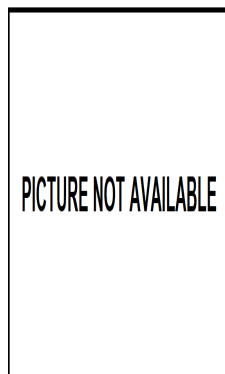
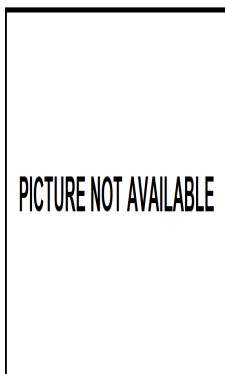
04930 Northern Lapwing (*Vanellus vanellus*)



Lapwing. Spring. Upperpart pattern: top 2nd year male (01-III); middle 2nd year female; bottom juvenile ().



Lapwing. Spring. Tail pattern: top 2nd year male (01-III); middle 2nd year female; bottom juvenile ().



Lapwing. Spring. Adult. tail pattern: left male (); right female ().

Lapwing. Spring. Adult. Male: wing formula ().

PICTURE NOT AVAILABLE

Lapwing. Spring. Adult. Female: wing formula ().

PICTURE NOT AVAILABLE

Lapwing. Spring. Juvenile: wing formula ().



Lapwing. Spring. 2nd year. Male: wing formula (01-III).

PICTURE NOT AVAILABLE

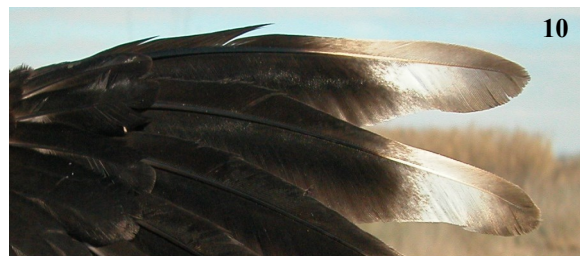
Lapwing. Spring. Adult. Male: pattern of 10th primary ().

PICTURE NOT AVAILABLE

Lapwing. Spring. Adult. Female: pattern of 10th primary ().

PICTURE NOT AVAILABLE

Lapwing. Spring. 2nd year. Female: wing formula ().



Lapwing. Spring. 2nd year. Male: pattern of 10th primary (01-III).

PICTURE NOT AVAILABLE

Lapwing. Spring. 2nd year. Female: pattern of 10th primary ().

PICTURE NOT AVAILABLE

Lapwing. Spring. Juvenile: pattern of 10th primary ().

PICTURE NOT AVAILABLE

Lapwing. Spring. Adult. Male: pattern of lesser coverts ().

PICTURE NOT AVAILABLE

Lapwing. Spring. Adult. Female: pattern of lesser coverts ().



Lapwing. Spring. 2nd year. Male: pattern of lesser coverts (01-III).

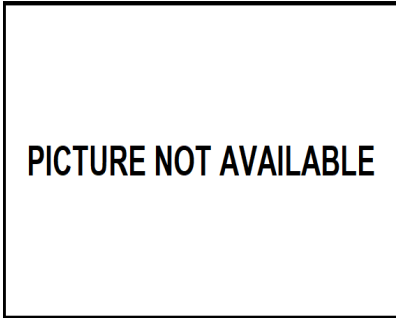
PICTURE NOT AVAILABLE

Lapwing. Spring. 2nd year. Female: pattern of lesser coverts ().

PICTURE NOT AVAILABLE

Lapwing. Spring. Juvenile: pattern of lesser coverts ().

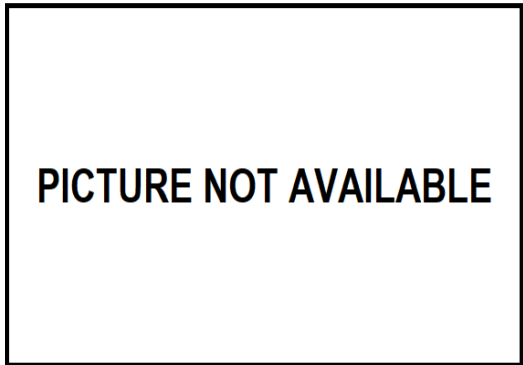
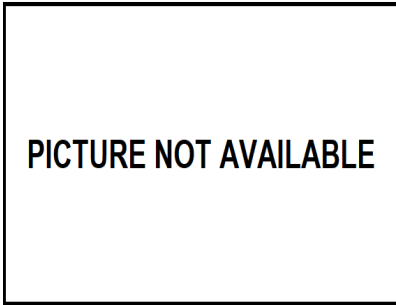
04930 Northern Lapwing (*Vanellus vanellus*)



Lapwing. Spring. Adult. Pattern of primary coverts: top male (); bottom female ().



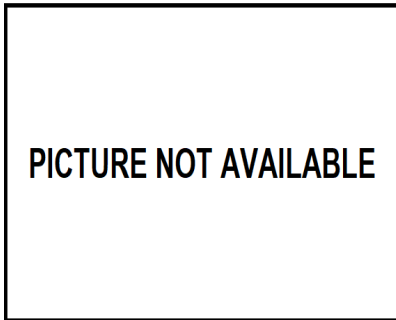
Lapwing. Spring. Adult. Male: pattern of secondaries ().



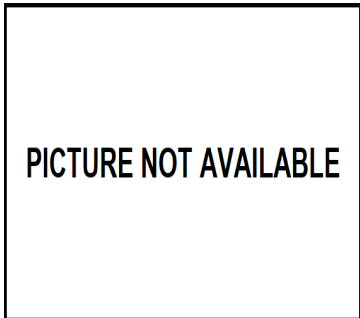
Lapwing. Spring. Adult. Female: pattern of secondaries ().



Lapwing. Spring. Pattern of primary coverts: top 2nd year male (01-III); middle 2nd year female; bottom juvenile ().



Lapwing. Spring. 2nd year. Male: pattern of secondaries (01-III).



PICTURE NOT AVAILABLE

PICTURE NOT AVAILABLE

Lapwing. Spring. 2nd year. Female: pattern of secondaries ().

Lapwing. Spring. Adult. Female: pattern of wing ().

PICTURE NOT AVAILABLE



Lapwing. Spring. 2nd year. Male: pattern of wing (01-III).

Lapwing. Spring. Juvenile: pattern of secondaries ().

PICTURE NOT AVAILABLE

PICTURE NOT AVAILABLE

Lapwing. Spring. 2nd year. Female: pattern of wing ().

Lapwing. Spring. Adult. Male: pattern of wing ().

PICTURE NOT AVAILABLE

Lapwing. Spring. Juvenile: pattern of wing ().

04930 Northern Lapwing (*Vanellus vanellus*)



Lapwing. Winter. Adult. Male (10-I).



Lapwing. Winter. Adult. Female (10-I).



Lapwing. Winter. 1st year. Male (26-XII).



Lapwing. Winter. 1st year. Female (23-XII).



Lapwing. Winter. Adulto. Head pattern: top male (10-I); bottom female (10-I).



Lapwing. Winter. 1st year. Head pattern: top male (26-XII); bottom female (23-XII).

04930 Northern Lapwing (*Vanellus vanellus*)



Lapwing. Winter. Adult. Breast pattern: left male (10-I); right female (10-I).



Lapwing. Winter. 1st year. Breast pattern: left male (26-XII); right female (23-XII).



Lapwing. Winter. Adult. Upperparts pattern: left male (10-I); right female (10-I).



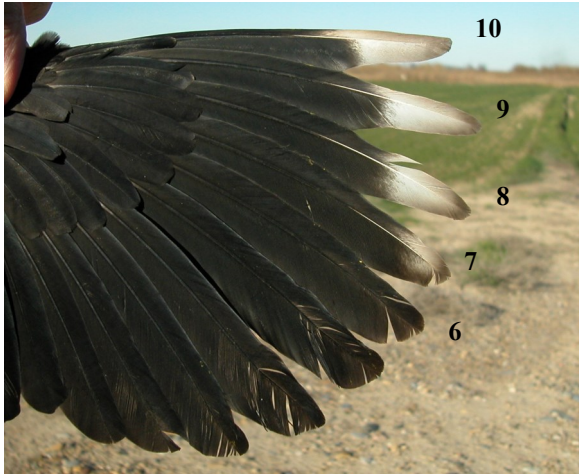
Lapwing. Winter. 1st year. Upperparts pattern: left male (26-XII); right female (23-XII).



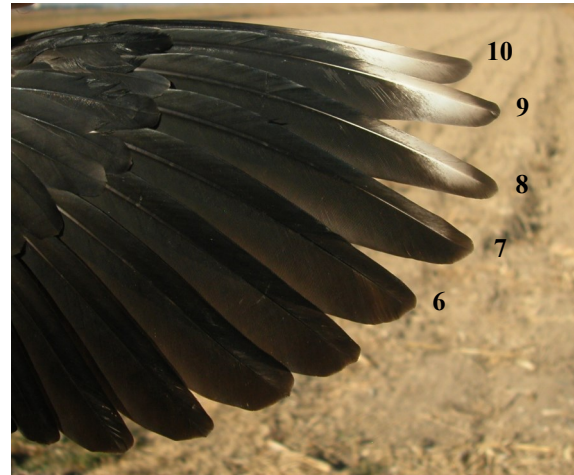
Lapwing. Winter. Adult. Pattern of the outermost tail feather: left male (10-I); right female (10-I).



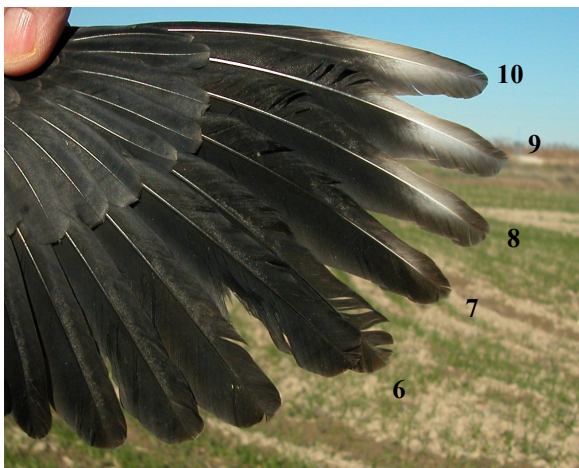
Lapwing. Winter. 1st year. Pattern of the outermost tail feather: left male (28-XII); right female (23-XII).



Lapwing. Winter. Adult. Male: wing formula (10-I).



Lapwing. Winter. 1st year. Female: wing formula (23-XII).



Lapwing. Winter. Adult. Female: wing formula (10-I).



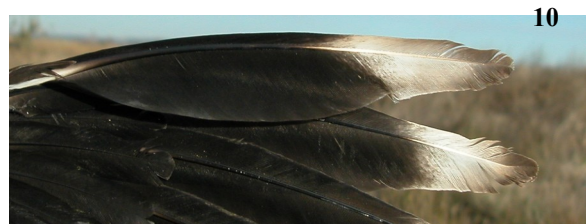
Lapwing. Winter. Adult. Male: pattern of 10th primary (10-I).



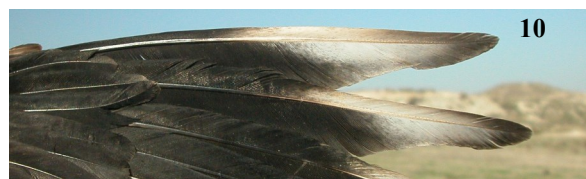
Lapwing. Winter. Adult. Female: pattern of 10th primary (10-I).



Lapwing. Winter. 1st year. Male: wing formula (26-XII).



Lapwing. Winter. 1st year. Male: pattern of 10th primary (26-XII).



Lapwing. Winter. 1st year. Female: pattern of 10th primary (10-XII).

04930 Northern Lapwing (*Vanellus vanellus*)



Lapwing. Winter. Adult. Male: pattern of lesser coverts (10-I).



Lapwing. Winter. Adult. Female: pattern of lesser coverts (10-I).



Lapwing. Winter. 1st year. Male: pattern of lesser coverts (26-XII).



Lapwing. Winter. 1st year. Female: pattern of lesser coverts (10-XII).



Lapwing. Winter. Adult. Pattern of primary coverts: top male (10-I); bottom female (10-I).



Lapwing. Winter. 1st year. Pattern of primary coverts: top male (26-XII); bottom female (10-XII).



Lapwing. Winter. Adult. Male: pattern of secondaries (10-I).



Lapwing. Winter. Adult. Female: pattern of secondaries (10-1).



Lapwing. Winter. 1st year with unmoulted secondaries. Female: pattern of secondaries (10-XII).



Lapwing. Winter. Adult with arrested moult. Female: pattern of secondaries (30-1).



Lapwing. Winter. 1st year with moulted inner secondaries. Female: pattern of secondaries (23-XII).



Lapwing. Winter. 1st year. Male: pattern of secondaries (26-XII).



Lapwing. Winter. Adult. Male: pattern of wing (10-I).



Lapwing. Winter. Adult. Female: pattern of wing (10-I).



Lapwing. Winter. Adult with arrested moult. Female: pattern of wing (30-I).



Lapwing. Winter. 1st year. Male: pattern of wing (26-XII).



Lapwing. Winter. 1st year with unmoulted secondaries. Female: pattern of wing (10-XII).



Lapwing. Winter. 1st year with moulted inner secondaries. Female: pattern of wing (23-XII).