

04770 Kentish Plover (*Charadrius alexandrinus*)



Kentish Plover. Spring. Adult. Male (11-V).

KENTISH PLOVER (*Charadrius alexandrinus*)

IDENTIFICATION

15-16 cm. Grey-brown upperparts; white underparts; breastband restricted to lateral patches, black on **male** and brown on **female**; rufous crown, edged black in **male**; brown wings with white band; bill and legs dark. **Juveniles** and **adults** in **autumn** browner, without black on head and with feathers on upperparts edged buff.



PICTURE NOT AVAILABLE

Kentish Plover. Spring. Female. Pattern of wing, head and breast.

PICTURE NOT AVAILABLE

PICTURE NOT AVAILABLE



Kentish Plover. Juvenile. Pattern of wing, head and breast.



Kentish Plover. Autumn. Adult. Pattern of wing, head and breast.



ESPECIES SIMILARES

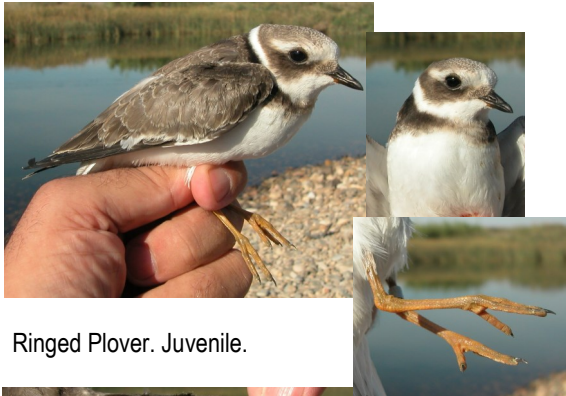
Ringed Plover and **Little Ringed Plover** have a complete breastband and pale legs



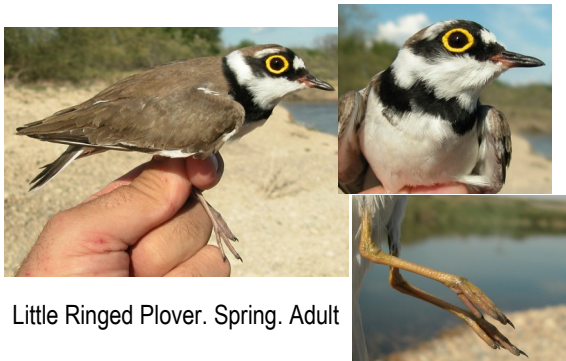
Ringed Plover. Spring. Adult



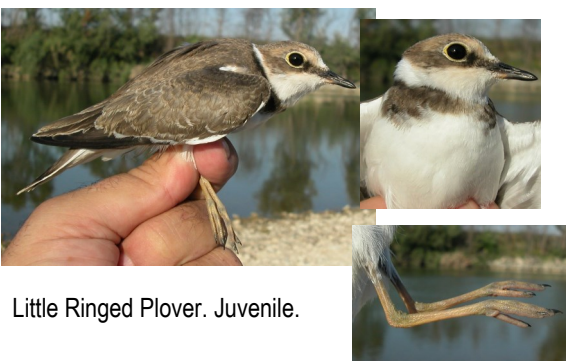
04770 Kentish Plover (*Charadrius alexandrinus*)



Ringed Plover. Juvenile.



Little Ringed Plover. Spring. Adult



Little Ringed Plover. Juvenile.

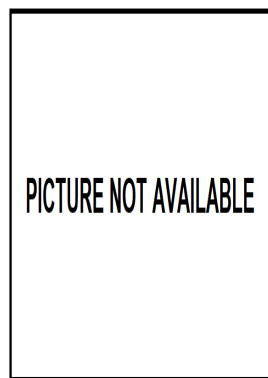


SEXING

In **breeding** plumage, **male** with black patches on head and neck; rufous crown. **Female** without black patches on head and neck (some birds with some dark feathers); pale brown crown. In **autumn**, after **postbreeding** moult, **males** tend to have white collar and supercilium broader than **females**, but variation and overlap are so great that these are not always useful characteristics for sexing; since early **winter**, **males** can be recognized by their first black feathers on head and collar. **Juveniles** cannot be sexed using plumage pattern.



Kentish Plover. Spring. Sexing. Pattern of head: top male; bottom female (photo: Alberto Casañal).



Kentish Plover. Spring. Sexing. Pattern of crown: left male; right female.

AGEING

3 age groups can be recognized:

Juvenile with upperparts and wing coverts grey-brown with distinct pale edge; neck patches pale brown, often indistinct; central tail feathers pointed with a thin buff edge; flight feathers fresh and always with one age.

2nd year spring often with some **juvenile** inner median coverts retained; primaries very worn. Some **males** (but not all) without rufous on crown and black feathers on head and neck mixed with grey-brown.

Adult in spring always with distinct dark marks on head, brown or black depending on sex; primaries slightly worn. In **autumn**, after **postbreeding** moult, both sexes are similar to **juveniles** but moulted median coverts washed brown with buff edge; central tail feathers rounded without buff edge; wing feathers with two ages or, if only one, with worn feathers.



Kentish Plover. Summer. Ageing. Pattern of head: top adult male; middle adult female (photo: Alberto Casañal); bottom juvenile.



Kentish Plover. Summer. Ageing Pattern of wing coverts: top adult in spring; bottom juvenile.



Kentish Plover. Autumn. Ageing. Wear of tertials: left adult; right juvenile.



Kentish Plover. Autumn. Ageing. Pattern of tail: left adult; right juvenile.

MOULT

Complete **postbreeding** moult, usually finished in October. Partial **postjuvenile** moult involving body feathers (some juvenile feathers retained on upperparts), tail and wing coverts (most of the greater coverts retained) with flight feathers remaining unmoulted; starting in breeding places and finished in wintering sites. Both age classes have a **prebreeding** moult including mainly most of the body feathers; some birds may also moult some wing coverts, some tertials and part or all of tail.

PHENOLOGY

I	II	III	IV	V	VI	VII	VIII	IX	X	XI	XII

- Summer visitor
- Wintering
- Resident
- On passage



Kentish Plover. Spring. Adult. Female ().



Kentish Plover. Spring. 2nd year. Male ().

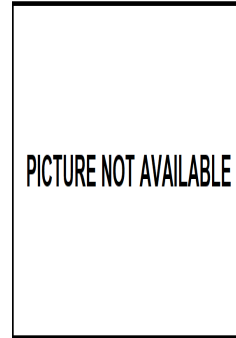
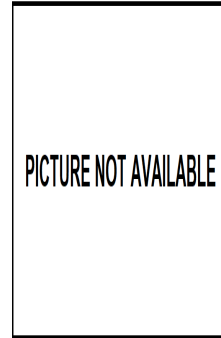


Kentish Plover. Spring. 2nd year. Female ().

04770 Kentish Plover (*Charadrius alexandrinus*)



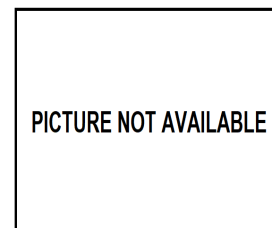
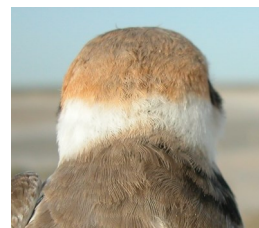
Kentish Plover. Spring. Adult. Head pattern: top male (11-V); bottom female ().



Kentish Plover. Spring. 2nd year. Crown pattern: left male (); right female ().



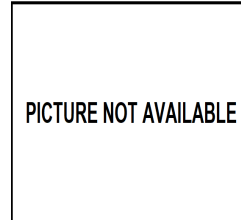
PICTURE NOT AVAILABLE



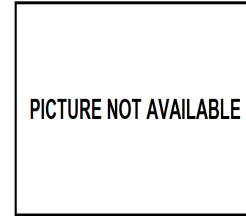
Kentish Plover. Spring. Adult. Nape pattern: left male (11-V); right female ().



PICTURE NOT AVAILABLE



PICTURE NOT AVAILABLE



PICTURE NOT AVAILABLE

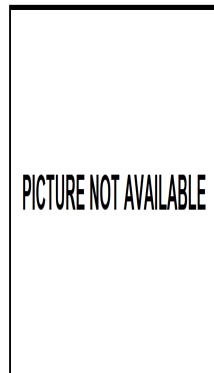
Kentish Plover. Spring. 2nd year. Nape pattern: left male (); right female ().



PICTURE NOT AVAILABLE



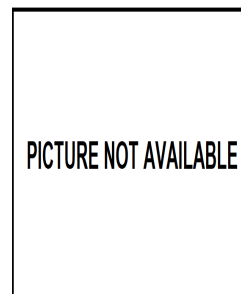
Kentish Plover. Spring. Adult. Crown pattern: left male (11-V); right female ().



PICTURE NOT AVAILABLE

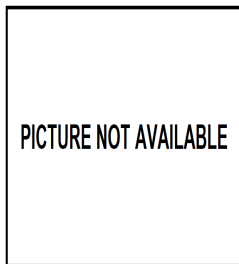
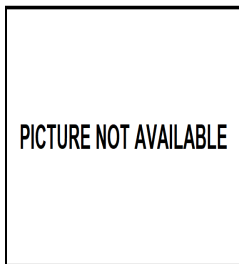


Kentish Plover. Spring. Adult. Breast pattern: left male (11-V); right female ().



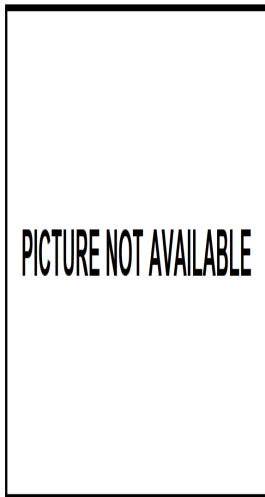
PICTURE NOT AVAILABLE

04770 Kentish Plover (*Charadrius alexandrinus*)



Kentish Plover. Spring. Adult. Pattern of legs: top male (11-V); bottom female ().

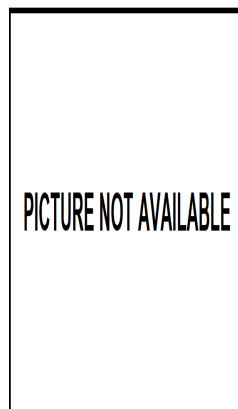
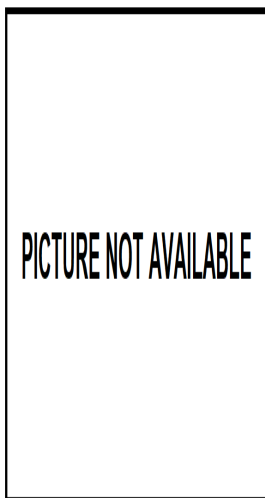
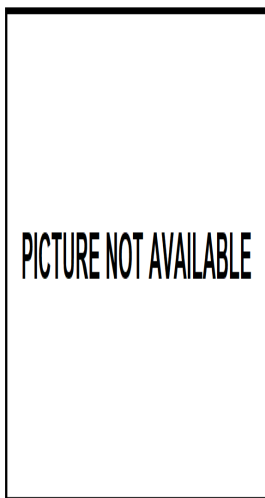
Kentish Plover. Spring. 2nd year. Breast pattern: left male (); right female ().



Kentish Plover. Spring. 2nd year. Pattern of legs: top male (); bottom female ().



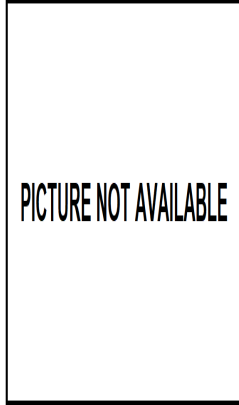
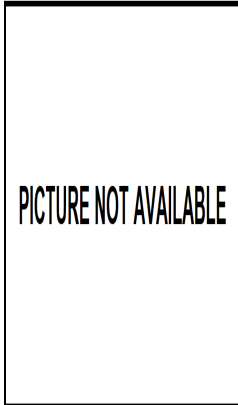
Kentish Plover. Spring. Adult. Upperpart pattern: left male (11-V); right female ().



Kentish Plover. Spring. Adult. Tail pattern: left male (11-V); right female ().

Kentish Plover. Spring. 2nd year. Upperpart pattern: left male (); right female ().

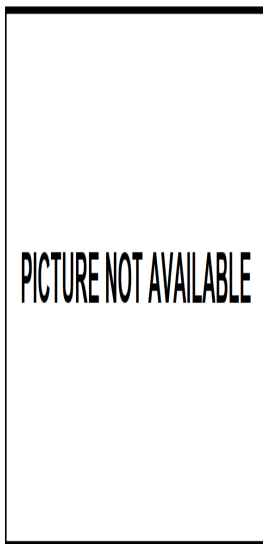
04770 Kentish Plover (*Charadrius alexandrinus*)



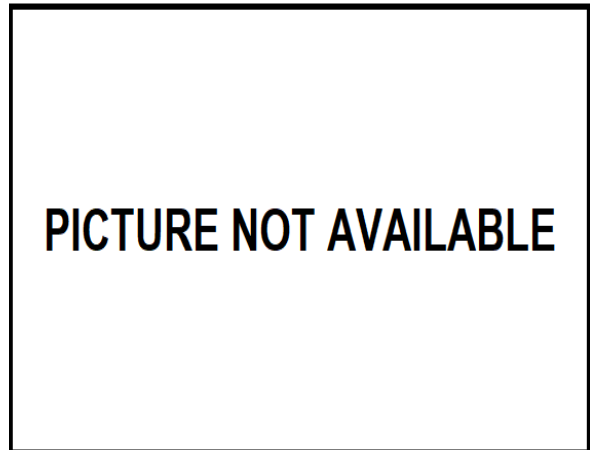
Kentish Plover. Spring. 2nd year. Tail pattern: left male (); right female ().



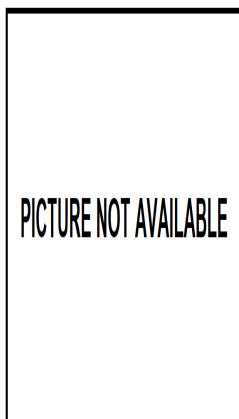
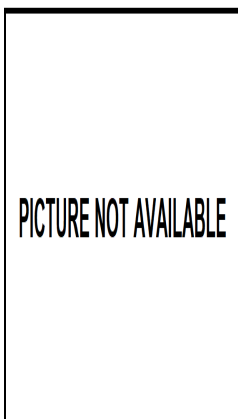
Kentish Plover. Spring. Adult. Male: pattern of wing covers (11-V).



Kentish Plover. Spring. Adult. Pattern of tertials: left male (11-V); right female ().



Kentish Plover. Spring. Adult. Female: pattern of wing covers ().



Kentish Plover. Spring. 2nd year. Pattern of tertials: left male (); right female ().



Kentish Plover. Spring. 2nd year. Male: pattern of wing covers ().

04770 Kentish Plover (*Charadrius alexandrinus*)



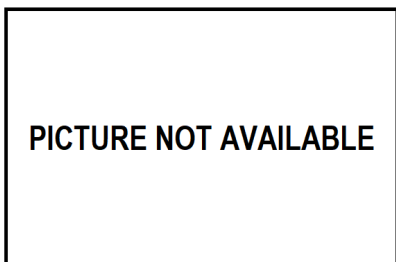
Kentish Plover. Spring. Adult. Male: pattern of primaries (11-V).

Kentish Plover. Spring. 2nd year. Female: pattern of wing coverts



Kentish Plover. Spring. Adult. Pattern of primary coverts: top male (11-V); bottom female ().

Kentish Plover. Spring. Adult. Female: pattern of primaries ().



Kentish Plover. Spring. 2nd year. Male: pattern of primaries ().



Kentish Plover. Spring. 2nd year. Pattern of primary coverts: top male (); bottom female ().



Kentish Plover. Spring. 2nd year. Female: pattern of primaries ().



PICTURE NOT AVAILABLE

Kentish Plover. Spring. 2nd year. Female: pattern of secondaries ().

PICTURE NOT AVAILABLE

Kentish Plover. Spring. Adult. Female: pattern of secondaries ().

PICTURE NOT AVAILABLE

Kentish Plover. Spring. 2nd year. Male: pattern of secondaries ().



Kentish Plover. Spring. Adult. Male: pattern of wing (12-V).

PICTURE NOT AVAILABLE

PICTURE NOT AVAILABLE

Kentish Plover. Spring. Adult. Female: pattern of wing ().

PICTURE NOT AVAILABLE

PICTURE NOT AVAILABLE

Kentish Plover. Spring. 2nd year. Male: pattern of wing ().

PICTURE NOT AVAILABLE

PICTURE NOT AVAILABLE

Kentish Plover. Spring. 2nd year. Female: pattern of wing ().



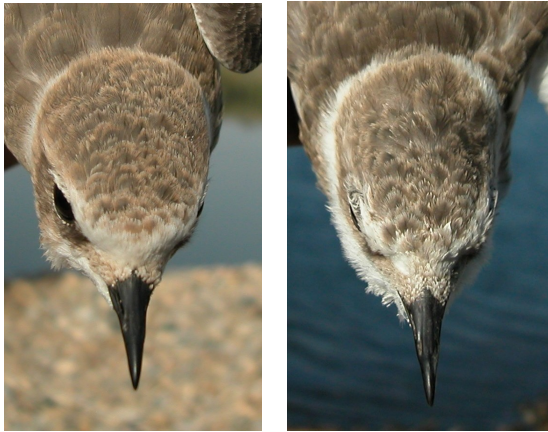
Kentish Plover. Autumn. Adult (06-IX).



Kentish Plover. Autumn. Juvenile (31-VIII).



Kentish Plover. Autumn. Head pattern: top adult (06-IX);
bottom juvenile (31-VIII).



Kentish Plover. Autumn. Crown pattern: left adult (06-IX); right juvenile (31-VIII).



Kentish Plover. Autumn. Upperpart pattern: left adult (06-IX); right juvenile (31-VIII).



Kentish Plover. Autumn. Nape pattern: left adult (06-IX); right juvenile (31-VIII).



Kentish Plover. Autumn. Pattern of legs: top adult (06-IX); bottom juvenile (31-VIII).



Kentish Plover. Autumn. Breast pattern: left adult (06-IX); right juvenile (31-VIII).



Kentish Plover. Autumn. Tail pattern: left adult (06-IX); right juvenile (31-VIII).



Kentish Plover. Autumn. Wear of tertials: left adult (06-IX); right juvenile (31-VIII).



Kentish Plover. Autumn. Adult: pattern of wing covers (06-IX).



Kentish Plover. Autumn. Juvenile: pattern of wing covers (31-VIII).



Kentish Plover. Autumn. Pattern of primary coverts: top adult (06-IX); bottom juvenile (31-VIII).



Kentish Plover. Autumn. Adult: pattern of primaries (06-IX).



Kentish Plover. Autumn. Juvenile: pattern of primaries (31-VIII).



Kentish Plover. Autumn. Adult: pattern of secondaries (06-IX).



Kentish Plover. Autumn. Juvenile: pattern of secondaries (31-VIII).



Kentish Plover. Autumn. Adult: pattern of wing (06-IX).



Kentish Plover. Autumn. Juvenile: pattern of wing (31-VIII).