



Ringed Plover. Spring. Adult. Male (12-V).

**COMMON RINGED PLOVER** (*Charadrius hiaticula*)

**IDENTIFICATION**

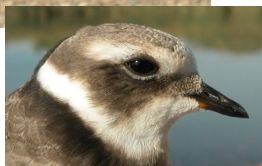
18-19 cm. Sandy upperparts; white underparts; black breastband, narrower on shoulders; black bar on forehead and eyes; buff wings with a white band; orange legs; bill with yellow base. **Juveniles** without black on head and with brown and incomplete collar.



Ringed Plover. Spring. Pattern of wing and black bars on head.



Ringed Plover. Juvenile



**SIMILAR SPECIES**

Recalls a **Little Ringed Plover** which in spring has dark base of bill and a marked ocular ring; in all plumages without a pale band on wing. **Kentish Plover** has dark legs and lacks black band on forehead. **Juvenile Little Ringed Plover** haven't got a white supercilium and breastband in **juvenile Kentish Plover** is only a little patch on breast.



Little Ringed Plover. Spring. Adult



Little Ringed Plover. Juvenile



Kentish Plover. Spring.

## SEXING

In **breeding** plumage, **male** with breastband all black or with only very few brown feathers on sides; ear-coverts clearly black. **Female** with breastband black with a considerable number of brown feathers; ear-coverts with brownish feathers. **Juveniles** cannot be sexed using plumage pattern.



Ringed Plover. Spring. Sexing. Pattern of dark bars on head: top male; bottom female



Ringed Plover. Spring. Sexing. Pattern of dark bar on breast: left male; right female

## AGEING

This species doesn't breed in Aragon, so only 3 age groups can be recognized:

**1st year** with brown breastband, often incomplete; head markings dark brown; upperpart and wing coverts with pale buff edges; dark bill; legs dull orange-yellowish; in **autumn** without active moult of flight feathers.

**2nd year spring** similar to **adult** but can retain some **juvenile** wing coverts; primaries moderately worn.

**Adult** in **spring** with black bands on breast and head; grey-brown wing coverts with thin whitish edges; bill with black tip and orange base; legs bright orange-yellow; in **autumn** with active moult of flight feathers; unmoulted wing feathers worn; dark bill; head markings with black and brown feathers.



Ringed Plover. Ageing. Pattern of head: top adult in spring; bottom juvenile



Ringed Plover. Ageing. Pattern of dark bar on breast: left adult; right juvenile.

**04700 Common Ringed Plover** (*Charandrius hiaticula*)

**MOULT**

Complete **postbreeding** moult starting in breeding areas, suspended before migration and finished in wintering sites. Partial **postjuvenile** moult including most or all body feathers, some inner median and lesser wing coverts and sometimes tertials and tail, remaining secondaries and primaries unmoulted; started in August and finished in winter quarters. In both age classes the **prebreeding** moult involves none or a few number of feathers only in body, tail, tertials and wing coverts.

**PHENOLOGY**

I	II	III	IV	V	VI	VII	VIII	IX	X	XI	XII

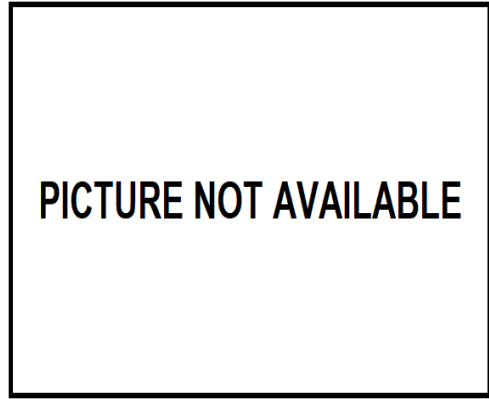
- Summer visitor      ■ Resident
- Wintering              ■ On passage



Ringed Plover. Spring. Adult. Female (14-V).



Ringed Plover. Spring. 2nd year. Male (13-V).



Ringed Plover. Spring. 2nd year. Female ().



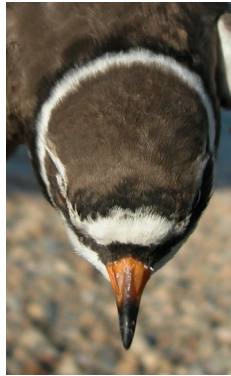
Ringed Plover. Spring. Adult. Head pattern: top male (12-V); bottom female (14-V).



Ringed Plover. Spring. 2nd year. Head pattern: top male (13-V); bottom female ().



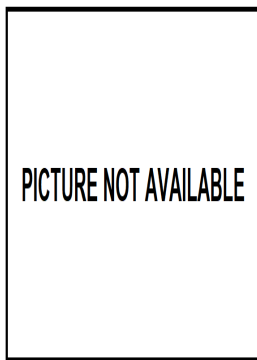
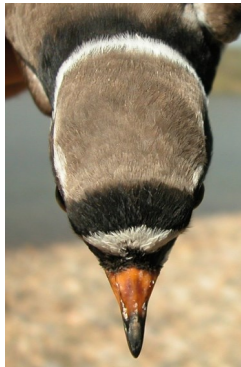
**04700 Common Ringed Plover** (*Charadrius hiaticula*)



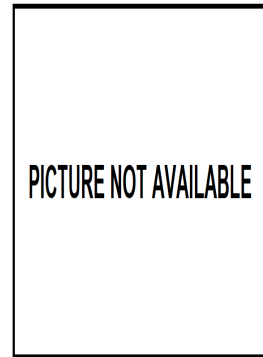
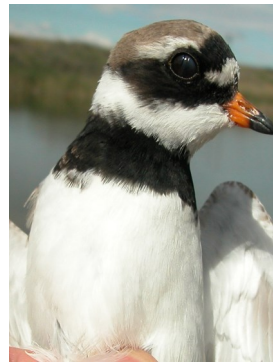
Ringed Plover. Spring. Adult. Crown pattern: left male (12-V); right female (14-V).



Ringed Plover. Spring. Adult. Breast pattern: left male (12-V); right female (14-V).



Ringed Plover. Spring. 2nd year. Crown pattern: left male (13-V); right female ().



Ringed Plover. Spring. 2nd year. Breast pattern: left male (13-V); right female ().



Ringed Plover. Spring. Adult. Nape pattern: left male (12-V); right female (14-V).



Ringed Plover. Spring. 2nd year. Nape pattern: left male (13-V); right female ().



Ringed Plover. Spring. Adult. Upperpart pattern: left male (12-V); right female (14-V).

# 04700 Common Ringed Plover (*Charadrius hiaticula*)



PICTURE NOT AVAILABLE

Ringed Plover. Spring. 2nd year. Upperpart pattern: left male (13-V); right female ().



Ringed Plover. Spring. Adult. Pattern of legs: top male (12-V); bottom female (14-V).



Ringed Plover. Spring. 2nd year. Pattern of legs: top male (13-V); bottom female ().

PICTURE NOT AVAILABLE



Ringed Plover. Spring. Adult. Tail pattern: left male (12-V); right female (14-V).



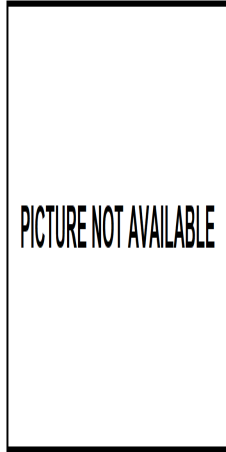
PICTURE NOT AVAILABLE

Ringed Plover. Spring. 2nd year. Tail pattern: left male (13-V); right female ().



Ringed Plover. Spring. Adult. Pattern of tertials: left male (12-V); right female (14-V).

**04700 Common Ringed Plover (*Charadrius hiaticula*)**



Ringed Plover. Spring. 2nd year. Pattern of tertials: left male (13-V); right female ().



Ringed Plover. Spring. Adult. Male: pattern of wing coverts (12-V).



Ringed Plover. Spring. Adult. Female: pattern of wing coverts (14-V).



Ringed Plover. Spring. 2nd year. Male: pattern of wing coverts (13-V).



Ringed Plover. Spring. 2nd year. female: pattern of wing coverts ala ().



Ringed Plover. Spring. Adult. Pattern of primary coverts: top male (12-V); bottom female (14-V).

**04700 Common Ringed Plover (*Charandrius hiaticula*)**



Ringed Plover. Spring. 2nd year. Pattern of primary coverts: top male (13-V); bottom female ().



PICTURE NOT AVAILABLE



PICTURE NOT AVAILABLE

Ringed Plover. Spring. 2nd year. Female: pattern of primaries ().



Ringed Plover. Spring. Adult. Male: pattern of primaries (12-V).



Ringed Plover. Spring. Adult. Male: pattern of secondaries (12-V).



Ringed Plover. Spring. Adult. Female: pattern of primaries (14-V).



Ringed Plover. Spring. Adult. Female: pattern of secondaries (14-V).

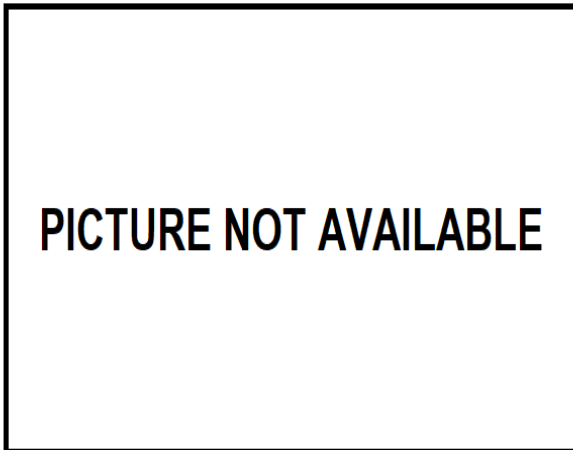


Ringed Plover. Spring. 2nd year. Male: pattern of primaries (13-V).

**04700 Common Ringed Plover** (*Charandrius hiaticula*)



Ringed Plover. Spring. 2nd year. Male: pattern of secondaries (13-V).



Ringed Plover. Spring. 2nd year. Female: pattern of secondaries ().



Ringed Plover. Spring. Adult. Male: pattern of wing (12-V).



Ringed Plover. Spring. Adult. Female: pattern of wing (14-V).



Ringed Plover. Spring. 2nd year. Male: pattern of wing (13-V).



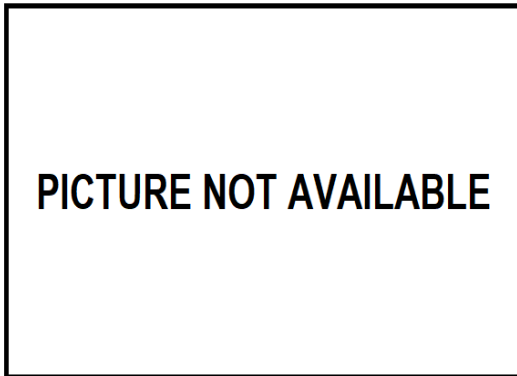
Ringed Plover. Spring. 2nd year. Female: pattern of wing ().



**04700 Common Ringed Plover** (*Charandrius hiaticula*)



Ringed Plover. Autumn. Adult. Male (11-IX).



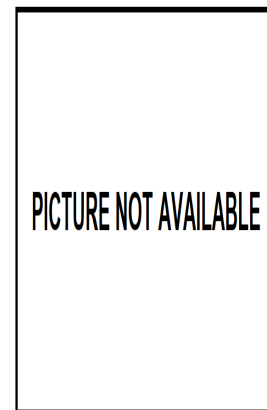
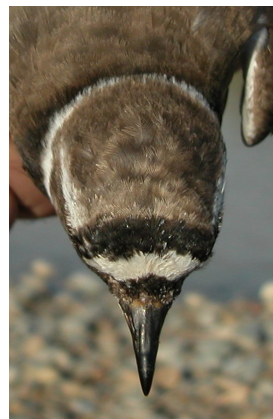
Ringed Plover. Autumn. Adult. Female ().



Ringed Plover. Autumn. Juvenile (11-IX).



Ringed Plover. Autumn. Head pattern: top adult male (11-IX); middle adult female (); bottom juvenile (11-IX).



Ringed Plover. Autumn. Crown pattern: top left adult male (); top right adult female (); left juvenile (11-IX).

**04700 Common Ringed Plover (*Charandrius hiaticula*)**



PICTURE NOT AVAILABLE



Ringed Plover. Autumn. Breast pattern: top left adult male (11-IX); top right adult female (); left juvenile (11-IX).



PICTURE NOT AVAILABLE



Ringed Plover. Autumn. Upperpart pattern: top left adult male (11-IX); top right adult female (); left juvenile (11-IX).



PICTURE NOT AVAILABLE



Ringed Plover. Autumn. Pattern of legs: top adult male (11-IX); middle adult female (); bottom juvenile (11-IX).



PICTURE NOT AVAILABLE



Ringed Plover. Autumn. Tail pattern: top left adult male (11-IX); top right adult female (); left juvenile (11-IX).

**04700 Common Ringed Plover (*Charadrius hiaticula*)**



PICTURE NOT AVAILABLE



Ringed Plover. Autumn. Juvenile: pattern of wing coverts (11-IX).



Ringed Plover. Autumn. Pattern of tertials: top left adult male (11-IX); top right adult female (); left juvenile (11-IX).



PICTURE NOT AVAILABLE

Ringed Plover. Autumn. Pattern of primary coverts: top adult male (11-IX); middle adult female (); bottom juvenile (11-IX).



Ringed Plover. Autumn. Adult. Male: pattern of wing coverts (11-IX).



PICTURE NOT AVAILABLE

Ringed Plover. Autumn. Adult. Female: pattern of wing coverts ().



Ringed Plover. Autumn. Adult. Male: pattern of primaries (11-IX).



Ringed Plover. Autumn. Adult. Female: pattern of primaries ().



Ringed Plover. Autumn. Juvenile: pattern of primaries (11-IX).



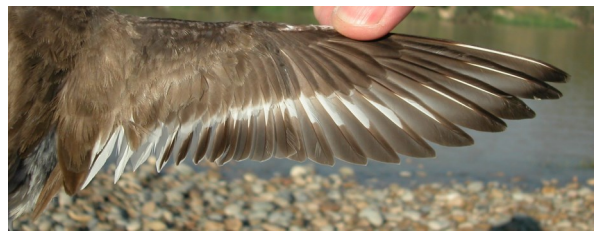
Ringed Plover. Autumn. Adult. Male: pattern of secondaries (11-IX).



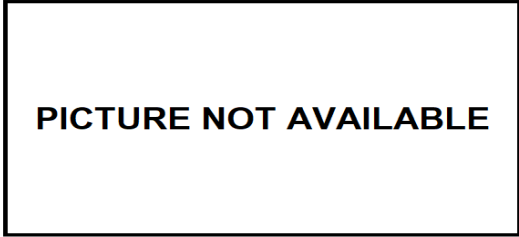
Ringed Plover. Autumn. Adult. Female: pattern of secondaries ().



Ringed Plover. Autumn. Juvenile: pattern of secondaries (11-IX).



Ringed Plover. Autumn. Adult. Male: pattern of wing (11-IX).



Ringed Plover. Autumn. Adult. female: pattern of wing ().



Ringed Plover. Autumn. Juvenile: pattern of wing (11-IX).