

04650 Collared Pratincole (*Glareola pratincola*)



Collared Pratincole. Spring. 2nd year. Male (29-IV).

COLLARED PRATINCOLE (*Glareola pratincola*)

IDENTIFICATION

22-25 cm. Brownish plumage; head with creamy throat and a thin black line around; wings brown above, with secondaries with white tips; underwing with reddish coverts; tail coverts white; tail very forked; black bill with reddish base.

SIMILAR SPECIES

This species is unmistakable.

SEXING

Both sexes with similar plumage, but **male** with black lores; **female** with brown lores. **Male** with difference between the longer and shorter tail feather bigger than 52 mm; if the difference is shorter, then can be both sexes.



Collared Pratincole. Spring. Sexing. Pattern of lores: top male; bottom female.



AGEING

3 types of age can be recognized:

Juvenil with upperparts, wing and tail brown with buff tips and dark subterminal bands; head and throat streaked brown and buff; tail fork shorter than in **adult**.

2nd year similar to **adults**; this age can be recognized only in birds with some unmoulted inner **juvenile** secondaries.

Adult with upperparts, wing and tail brown; head with thin black line around the throat; without moult limit between old and new inner secondaries although can be found a limit between primaries due to suspended moult in autumn; tail fork longer than in **juvenile**.

MOULT

Complete **postbreeding** and **postjuvenile** moults, starting in breeding areas, suspended during migration and finished in wintering quarters. Some **juvenile** birds can retain some inner secondaries. Both types of age have a **prebreeding** moult acquiring then the breeding plumage.

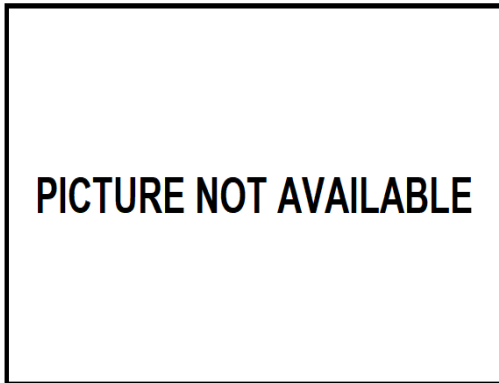
PHENOLOGY

I	II	III	IV	V	VI	VII	VIII	IX	X	XI	XII

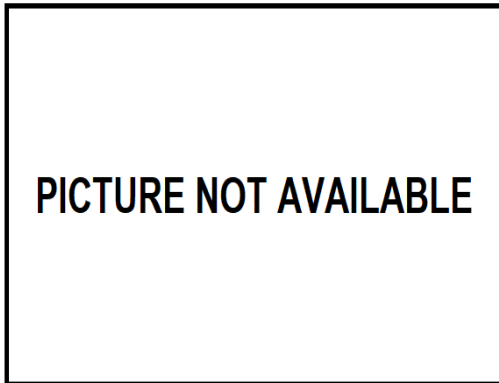
- Summer visitor
- Resident
- Wintering
- On passage



Collared Pratincole. Spring. Adult. Female (29-IV).



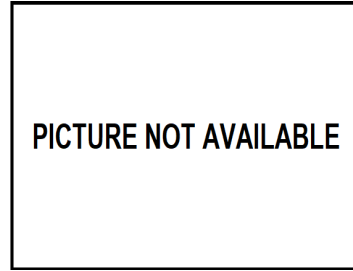
Collared Pratincole. Spring. Adult. Male ().



Collared Pratincole. Spring. 2nd year. Female ().



Collared Pratincole. Spring. Juvenile ().

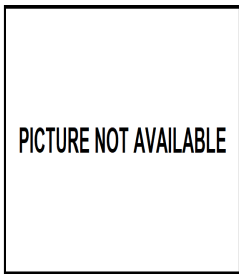


Collared Pratincole. Spring. Adult. Head pattern: top male (); bottom female (29-IV).

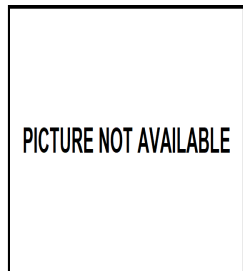
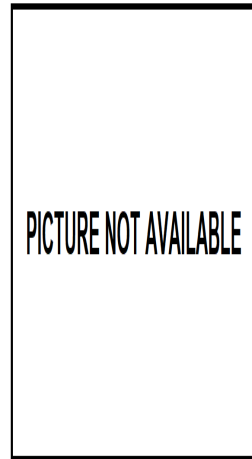


Collared Pratincole. Spring. Head pattern: top 2nd year male (29-IV); middle 2nd year female (); bottom juvenile ().

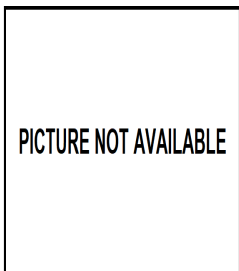
04650 Collared Pratincole (*Glareola pratincola*)



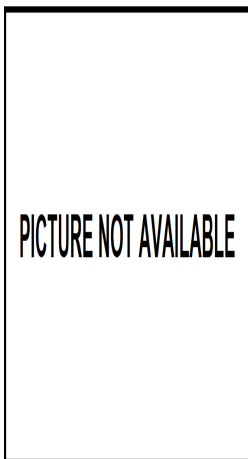
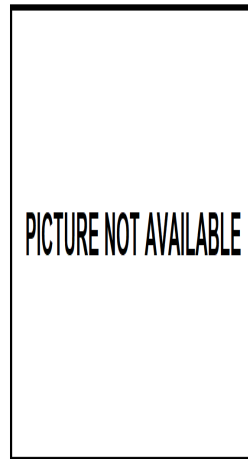
Collared Pratincole. Spring. Adult. Breast pattern: left male (); right female (29-IV).



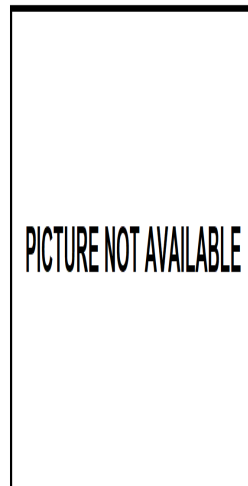
Collared Pratincole. Spring. Upperpart pattern: top left 2nd year male (29-IV); top right 2nd year female (); left juvenile ().



Collared Pratincole. Spring. Breast pattern: top left 2nd year male (29-IV); top right 2nd year female (); left juvenile ().

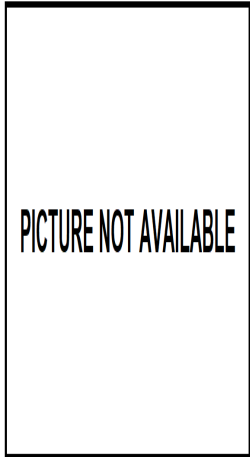


Collared Pratincole. Spring. Adult. Upperpart pattern: left male (); right female (29-IV).

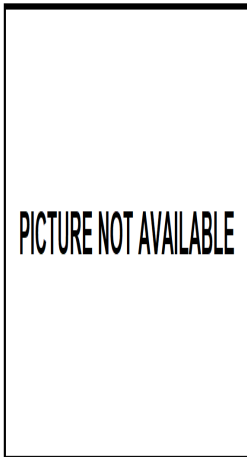


Collared Pratincole. Spring. Adult. Tail pattern: left male (); right female (29-IV).

04650 Collared Pratincole (*Glareola pratincola*)



Collared Pratincole. Spring. 2nd year. Male: pattern of primaries (29-IV).



Collared Pratincole. Spring. Tail pattern: top left 2nd year male (29-IV); top right 2nd year female (); left juvenile ().



Collared Pratincole. Spring. 2nd year. Female: pattern of primaries ().



Collared Pratincole. Spring. Juvenile: pattern of primaries ().

Collared Pratincole. Spring. Adult. Male: pattern of primaries ().



Collared Pratincole. Spring. Adult. Female: pattern of primaries (29-IV).



Collared Pratincole. Spring. Adult. Male: pattern of secondaries ().

04650 Collared Pratincole (*Glareola pratincola*)



Collared Pratincole. Spring. Adult. Female: pattern of secondaries (29-IV).



Collared Pratincole. Spring. 2nd year. Male: pattern of secondaries (29-IV).

PICTURE NOT AVAILABLE

Collared Pratincole. Spring. 2nd year. Female: pattern of secondaries ().

PICTURE NOT AVAILABLE

Collared Pratincole. Spring. Juvenile: pattern of secondaries ().

PICTURE NOT AVAILABLE

PICTURE NOT AVAILABLE

Collared Pratincole. Spring. Adult. Male: pattern of wing ().



Collared Pratincole. Spring. Adult. Female: pattern of wing (29-IV).



Collared Pratincole. Spring. 2nd year. Male: pattern of wing (29-IV).

PICTURE NOT AVAILABLE

PICTURE NOT AVAILABLE

Collared Pratincole. Spring. 2nd year. Female: pattern of wing ().

PICTURE NOT AVAILABLE

PICTURE NOT AVAILABLE

Collared Pratincole. Spring. Juvenile: pattern of wing ().