

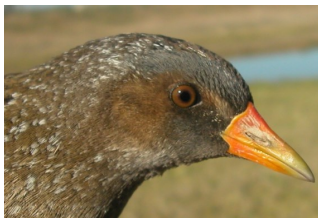


Spotted Crake. Spring. Adult. Male (21-III)

SPOTTED CRAKE (*Porzana porzana*)

IDENTIFICATION

21-23 cm. Head with black spotted brown crown and grey band on sides; feathers on upperparts and wing coverts dark brown, with olive edges and white streaks; breast white spotted; underparts grey with olive tinge; flanks barred with brown, black and white bars; green-yellowish bill with red base; green olive legs.



Spotted Crake. Pattern of head and undertail coverts.

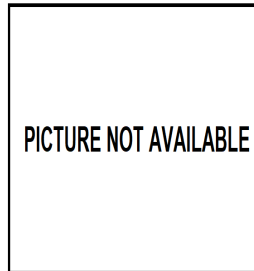


SIMILAR SPECIES

Water Rail has a long and red bill. **Little Crake** lacks white speckling on head, breast and nape. **Baillon's Crake** lacks white speckling on head and without red spot on base of bill.



Water Rail



Little Crake



Baillon's Crake



SEXING

In **spring**, during **breeding** period, **male** with supercilium, cheeks and throat pure slate grey with only a small area of white speckling bordering ear coverts; most **males** with bright and contrasted bill; wing longer than 124 mm. **Female** with supercilium, cheeks and throat dull slate grey with heavy white speckling bordering ear coverts; some **females** with dull and slightly contrasted bill; wing shorter than 116 mm.

In **autumn**, **adult male** with cheeks and throat heavily speckled with white; supercilium grey with some white speckling mainly to the rear of head. **Adult female** similar to **male**, but throat and cheeks heavily speckled white with pure grey restricted to front part of supercilium and to central chin (**CAUTION**: in both seasons, sexes have great overlap in pattern, colours and biometrics, so these characteristics are useful only for extreme birds).

1st year birds cannot be sexed using plumage pattern.

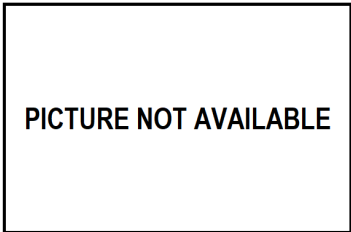
04080 Spotted Crane (*Porzana porzana*)



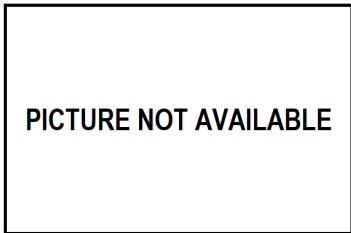
Spotted Crane. Spring. Sexing. Pattern of head: top male; bottom female



Spotted Crane. Spring. Ageing. Wear of primaries: top adult; bottom 2nd year.



Spotted Crane. Autumn. Sexing. Pattern of head: top male; bottom female



Spotted Crane. Ageing. Pattern of head and colour of bill: top adult; bottom 1st year.

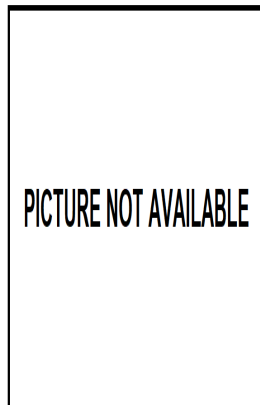
AGEING

This species is unlikely to breed in Aragon, so only 3 age groups are described:

1st year with whitish throat; sides of head and supercilium with extensive white speckles; dark brown iris.

2nd year spring similar to **adults** and many indistinguishable, but can retain old pale **juvenile** feathers on chin and throat; with **juvenile** flight feathers.

Adult with plumage described in **SEXING**; pale brown iris.



Spotted Crane. Ageing. Pattern of chin: left adult; right 1st year.

04080 Spotted Crake (*Porzana porzana*)

MOULT

Complete **postbreeding** moult, usually finished in October. Partial **postjuvenile** moult confined to body feathers; generally finished in October. Both age classes have a **prebreeding** moult confined to body feathers.

PHENOLOGY

I	II	III	IV	V	VI	VII	VIII	IX	X	XI	XII

- Summer visitor ■ Resident
- Wintering ■ On passage



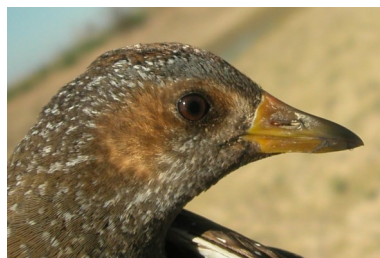
Spotted Crake. Spring. 2nd year. Female (21-III)



Spotted Crake. Spring. Adult. Female (21-III)



Spotted Crake. Spring. Adult. Head pattern: top male (21-III); bottom female (21-III).



Spotted Crake. Spring. 2nd year. Head pattern: top male (25-IV) (Photo: Reinhard Vohwinkel); bottom female (21-III).

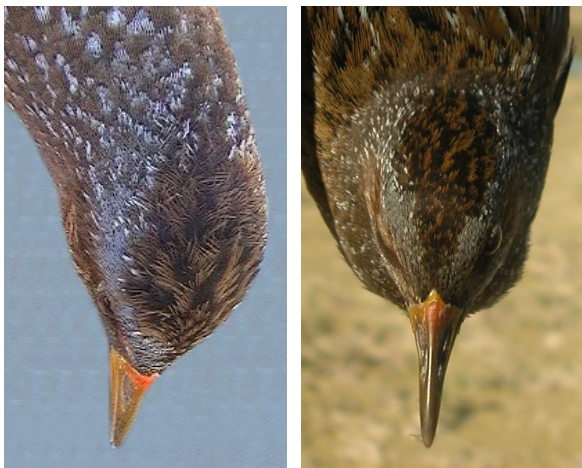
PICTURE NOT AVAILABLE

Spotted Crake. Spring. 2nd year. Male ()

04080 Spotted Crane (*Porzana porzana*)



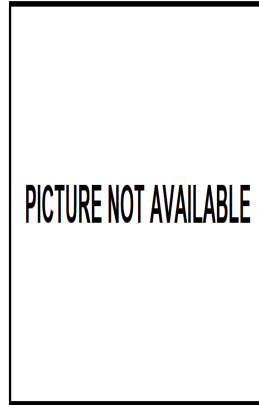
Spotted Crane. Spring. Adult. Crown pattern: left male (21-III); right female (21-III).



Spotted Crane. Spring. 2nd year. Crown pattern: left male (Photo: Reinhard Vohwinkel); right female (21-III).



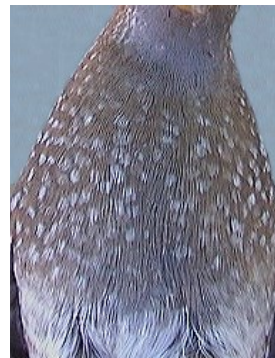
Spotted Crane. Spring. Adult. Chin pattern: left male (21-III); right female (21-III).



Spotted Crane. Spring. 2nd year. Chin pattern: left male (); right female (21-III).



Spotted Crane. Spring. Adult. Breast pattern: left male (21-III); right female (21-III).

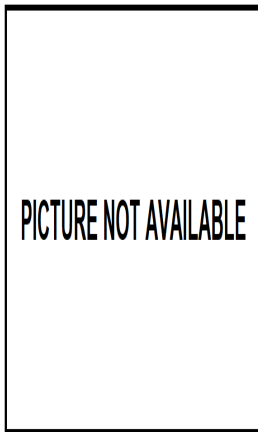


Spotted Crane. Spring. 2nd year. Breast pattern: left male (Photo: Reinhard Vohwinkel); right female (21-III).

04080 Spotted Crake (*Porzana porzana*)



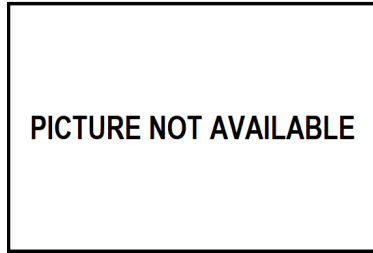
Spotted Crake. Spring. Adult. Pattern of upperparts: left male (21-III); right female (21-III).



Spotted Crake. Spring. 2nd year. Pattern of upperparts: left male (); right female (21-III).



Spotted Crake. Spring. Adult. Pattern of legs: top male (21-III); bottom female (21-III).



Spotted Crake. Spring. 2nd year. Pattern of legs: top male (); bottom female (21-III).



Spotted Crake. Spring. Adult. Tail pattern: left male (21-III); right female (21-III).



Spotted Crake. Spring. 2nd year. Tail pattern: left male (Photo: Reinhard Vohwinkel); right female (21-III).

04080 Spotted Crane (*Porzana porzana*)



Spotted Crane. Spring. Adult. Pattern of undertail coverts: left male (21-III); right female (21-III).



Spotted Crane. Spring. 2nd year. Pattern of undertail coverts: left male (Photo: Reinhard Vohwinkel); right female (21-III).



Spotted Crane. Spring. Adult. Male: pattern of flank (21-III).



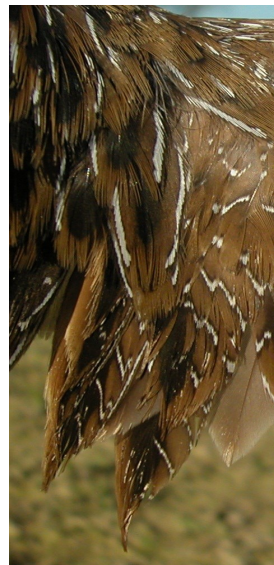
Spotted Crane. Spring. Adult. Female: pattern of flank (21-III).



Spotted Crane. Spring. 2nd year. Male: pattern of flank (Photo: Reinhard Vohwinkel).



Spotted Crane. Spring. 2nd year. Female: pattern of flank (21-III).



Spotted Crane. Spring. Adult. Pattern of tertials: left male (21-III); right female (21-III).

04080 Spotted Crake (*Porzana porzana*)



Spotted Crake. Spring. 2nd year. Pattern of tertials: left male (Photo: Reinhard Vohwinkel); right female (21-III).



Spotted Crake. Spring. 2nd year. Male: pattern of primary coverts (Photo: Reinhard Vohwinkel).



Spotted Crake. Spring. Adult. Male: pattern of primary coverts (21-III).



Spotted Crake. Spring. 2nd year. Female: pattern of primary coverts (21-III).



Spotted Crake. Spring. Adult. Female: pattern of primary coverts (21-III).



Spotted Crake. Spring. Adult. Male: pattern of primaries (21-III).

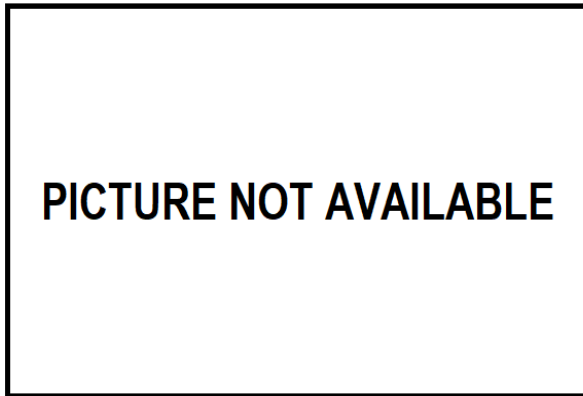
04080 Spotted Crake (*Porzana porzana*)



Spotted Crake. Spring. Adult. Female: pattern of primaries (21-III).



Spotted Crake. Spring. Adult. Male: pattern of secondaries (21-III).



Spotted Crake. Spring. 2nd year. Male: pattern of primaries ().



Spotted Crake. Spring. Adult. Female: pattern of secondaries (21-III).



Spotted Crake. Spring. 2nd year. Female: pattern of primaries (21-III).



Spotted Crake. Spring. 2nd year. Male: pattern of secondaries (Photo: Reinhard Vohwinkel).

04080 Spotted Crake (*Porzana porzana*)



Spotted Crake. Spring. 2nd year. Female: pattern of secondaries (21-III).



Spotted Crake. Spring. Adult. Male: pattern of wing (21-III).



Spotted Crake. Spring. Adult. Female: pattern of wing (21-III).

PICTURE NOT AVAILABLE

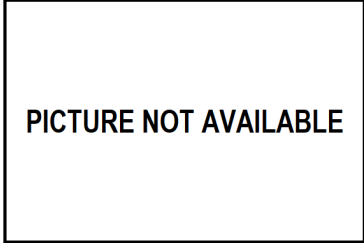
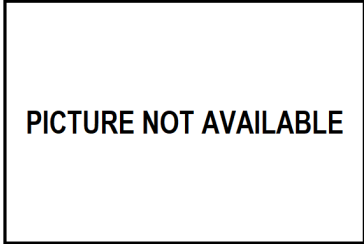
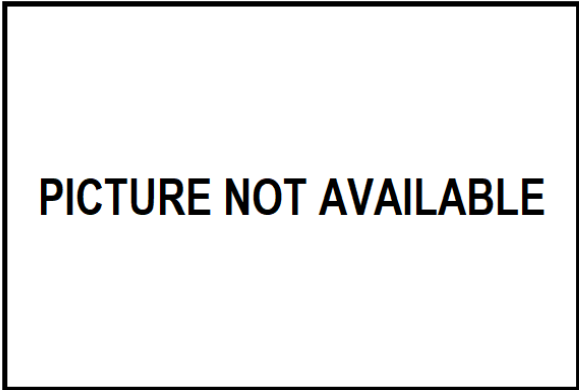
PICTURE NOT AVAILABLE

Spotted Crake. Spring. 2nd year. Male: pattern of wing ().



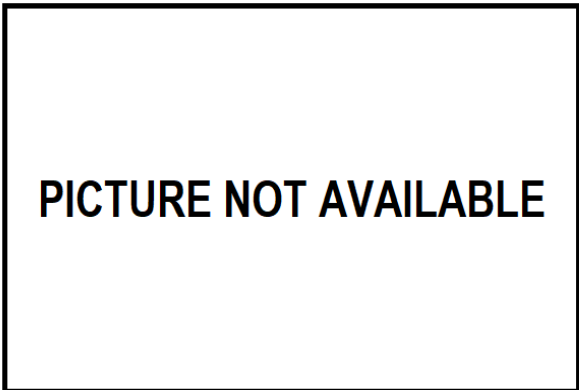
Spotted Crake. Spring. 2nd year. Female: pattern of wing (21-III).

04080 Spotted Crane (*Porzana porzana*)

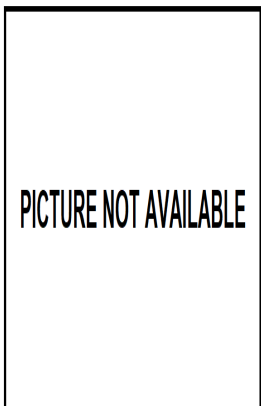
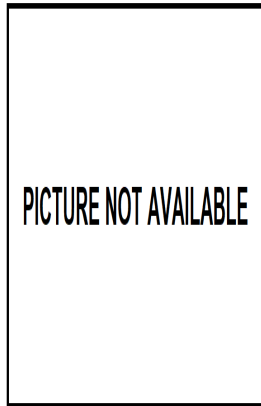


Spotted Crane. Autumn. Head pattern and bill colour: top adult male (); middle adult female (); bottom 1st year (28-X).

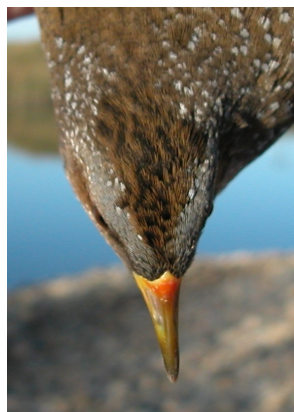
Spotted Crane. Autumn. Adult. Male ().



Spotted Crane. Autumn. Adult. Female ().

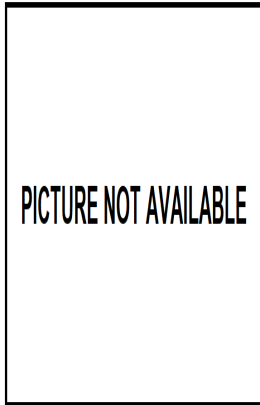
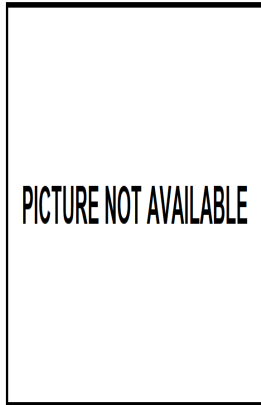


Spotted Crane. Autumn. 1st year (28-X).

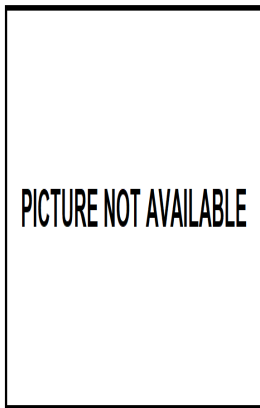
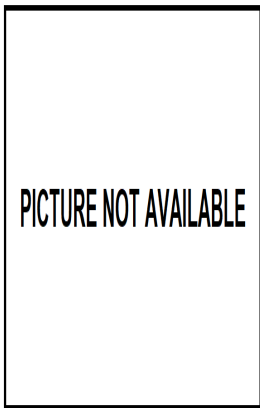


Spotted Crane. Autumn. Crown pattern: top left adult male (); top right adult female (); left 1st year (28-X).

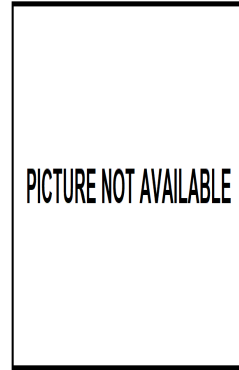
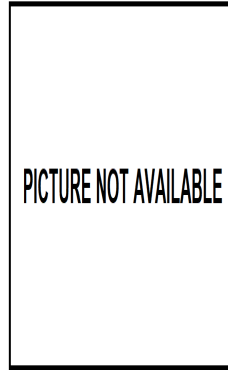
04080 Spotted Crake (*Porzana porzana*)



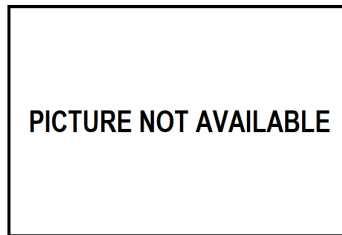
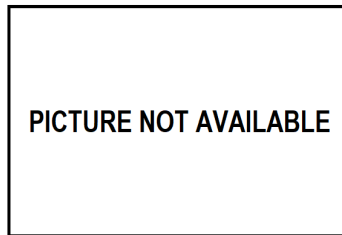
Spotted Crake. Autumn. Chin pattern: top left adult male (); top right adult female (); left 1st year (28-X).



Spotted Crake. Autumn. Breast pattern: top left adult male (); top right adult female (); left 1st year (28-X).



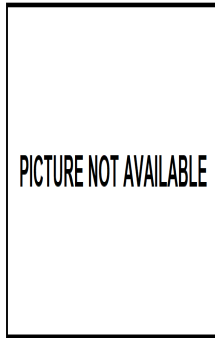
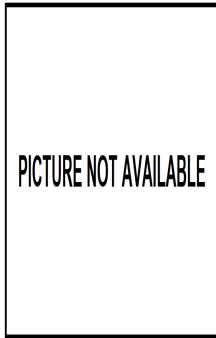
Spotted Crake. Autumn. Upperpart pattern: top left adult male (); top right adult female (); left 1st year (28-X).



Spotted Crake. Autumn. Pattern fo legs: top adult male (); middle adult female (); bot-tom 1st year (28-X).



04080 Spotted Crane (*Porzana porzana*)



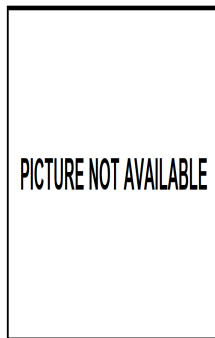
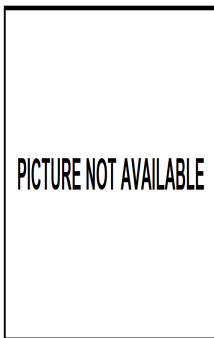
Spotted Crane. Autumn. Adult. Male: pattern of flank ().



Spotted Crane. Autumn. Tail pattern: top left adult male (); top right adult female (); left 1st year (28-X).



Spotted Crane. Autumn. Adult. Female: pattern of flank ().

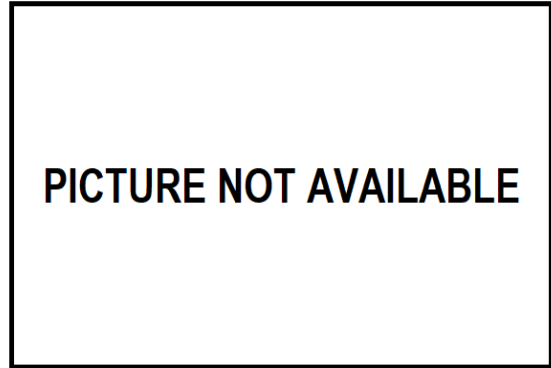
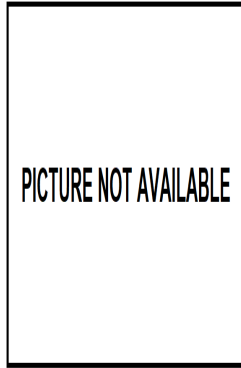
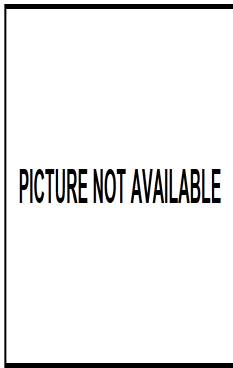


Spotted Crane. Autumn. 1st year: pattern of flank (28-X).



Spotted Crane. Autumn. Pattern of undertail coverts: top left adult male (); top right adult female (); left 1st year (28-X).

04080 Spotted Crake (*Porzana porzana*)



Spotted Crake. Autumn. Pattern of tertials: top left adult male (); top right adult female (); left 1st year (28-X).

Spotted Crake. Autumn. Adult. Female: pattern of primary coverts ().



Spotted Crake. Autumn. 1st year: pattern of primary coverts (28-X).



Spotted Crake. Autumn. Adult. Male: pattern of primary coverts ().

Spotted Crake. Autumn. Adult. Male: pattern of primaries ().

PICTURE NOT AVAILABLE

Spotted Crane. Autumn. Adult. Female: pattern of primaries ().



Spotted Crane. Autumn. 1st year: pattern of primaries (28-X).

PICTURE NOT AVAILABLE

Spotted Crane. Autumn. Adult. Male: pattern of secondaries ().

PICTURE NOT AVAILABLE

Spotted Crane. Autumn. Adult. Female: pattern of secondaries ().



Spotted Crane. Autumn. 1st year: pattern of secondaries (28-X).

PICTURE NOT AVAILABLE



PICTURE NOT AVAILABLE



Spotted Crake. Autumn. Adult. Male: pattern of wing ().

Spotted Crake. Autumn. 1st year: pattern of wing (28-X).

PICTURE NOT AVAILABLE

PICTURE NOT AVAILABLE

Spotted Crake. Autumn. Adult. Female: pattern of wing ().