

03219 Identification of Kestrels (*Falco*)

IDENTIFICATION OF ADULTS AND JUVENILES OF LESSER KESTREL AND COMMON KESTREL

ALL AGES AND SEXES

All ages and sexes can be separated by colour of claws and wing formula.



Lesser Kestrel. Colour of claws: colour pale.



Common Kestrel. Colour of claws: colour black.



Lesser Kestrel. Wing formula: outermost primary longer than 7th.



Common Kestrel. Wing formula: outermost primary with the same length than 7th.

<http://blascozumeta.com>

ADULT MALE

Adult male can be separated by pattern of upperparts.



Lesser Kestrel. Adult. Male. Pattern of upperparts: unspotted feathers.



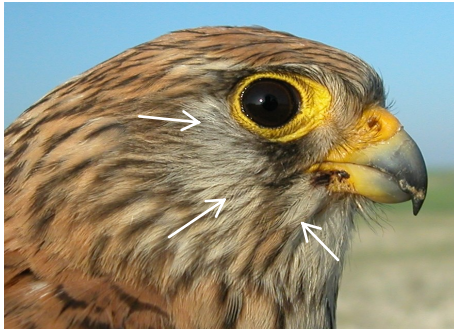
Common Kestrel. Adult. Male. Pattern of upperparts: spotted feathers.

<http://www.aranzadi.eus>

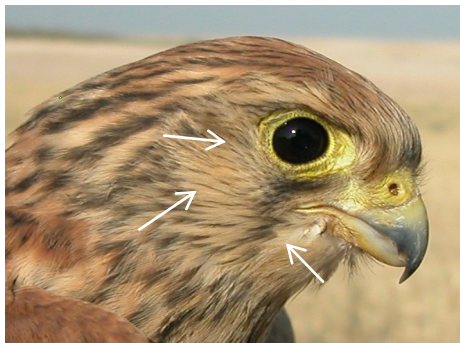
ADULT FEMALE AND JUVENILE

Adult female and **juvenile** can be separated by pattern of head and pattern of median wing coverts.

CAUTION: some of these characters are no always possible to see due to overlap.

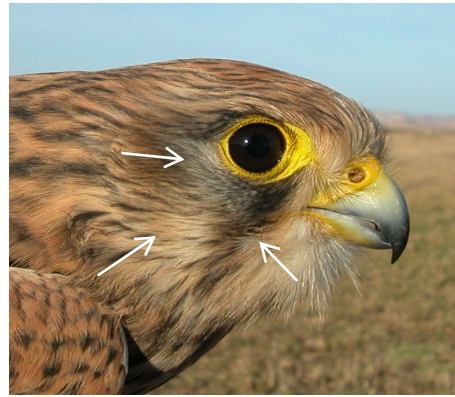


Lesser Kestrel. Adult. Female.

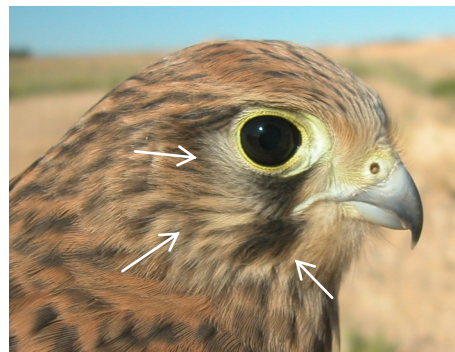


Lesser Kestrel. Juvenile.

Lesser Kestrel. Pattern of head: dark moustachial stripe poorly distinct, pale cheeks with thin streaks and no dark line on the eye.



Common Kestrel. Adult. Female.



Common Kestrel. Juvenile.

Common Kestrel. Pattern of head: dark moustachial stripe clearly distinct, pale cheeks with dark streaks and thin dark line on the eye.



Lesser Kestrel. Adult. Female. Pattern of median wing coverts: dark band on edge with V-shape.



Common Kestrel. Adult. Female. Pattern of median wing coverts: dark band on edge with triangular shape.