

130 Lesser Kestrel

Put your logo here



Lesser Kestrel. Adult. Male (10-V).

LESSER KESTREL (*Falco naumanni*)**IDENTIFICATION**

27-33 cm. Pointed wings and long tail, with black terminal band; pale claws; brown upperparts, mottled only in **female**; pale buff underparts with dark mottled; grey unstreaked head and tail in **male**, buff and streaked in **female** and **juvenile**; outermost primary longer than 7th.



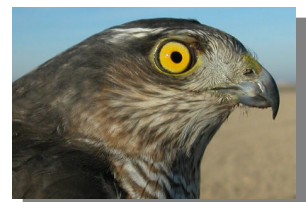
Lesser Kestrel. Male: pattern of wing, upperparts and head.



Lesser Kestrel. Female. Wing formula and colour of claws.

SIMILAR SPECIES

Recalls a **Sparrowhawk**, with grey upperparts and yellow or orange iris. The only small raptor with brown upperparts is **Kestrel**, with dark claws and outermost primary with the same length than 7th; **male Kestrel** have spotted upperparts and without a blue band on wings.



Sparrowhawk

130 Lesser Kestrel

Put your logo here



Kestrel. Male

SEXING

Adult male with unstreaked grey head; tail, uppertail coverts and rump uniform grey without barred; buff mantle without mottled; broad bluish band on wings. **Adult female** with streaked head; barred tail usually with greyish tinge; mantle and upperwing coverts mottled. **Juveniles** can be sexed in extreme birds: **male** with uppertail coverts and tail feathers strongly tinged grey; lesser coverts scarcely spotted. **Female** with uppertail coverts and tail feathers without grey tinge; lesser coverts strongly spotted. After **postjuvenile** moult both sexes have body feathers similar to **adults**.



Lesser Kestrel. Sexing. Adult. Pattern of head: top male; bottom female.



Kestrel. Female: formula and colour of wing and claws.



Lesser Kestrel. Sexing. Adult. Pattern of upperparts: left male; right female.

130 Lesser Kestrel

Put your logo here



Lesser Kestrel. Sexing. Adult. Pattern of rump and tail: left male; right female.



Lesser Kestrel. Sexing. Juvenile. Pattern of rump and tail: left male; right female.



Lesser Kestrel. Sexing. Juvenile. Pattern of lesser coverts: top male; bottom female.



AGEING

3 age groups can be recognized:

Juvenile with fresh plumage without moult limits on tail and flight feathers; primary coverts with broad pale tip.

2nd year with moult limit within moulted feathers with **adult** pattern and retained **juvenile** ones (**CAUTION:** in **females** is not always easy to separate both ages of feathers); tail and flight feathers are **juvenile** and quite worn.

Adult without **juvenile** feathers on body and wings; tail and flight feathers quite fresh; primary coverts without pale tip.

MOULT

Complete **postbreeding** moult, starting in May-June, suspended before migration and finished in wintering sites. Partial **postjuvenile** moult confined to body feathers, scapulars and lesser and median wing coverts; some birds extend their moult to most or all wing coverts; usually started in October and finished in wintering sites.

PHENOLOGY

I	II	III	IV	V	VI	VII	VIII	IX	X	XI	XII

STATUS IN ARAGON

Summer visitor. Breeds in buildings near non irrigated crops in the Ebro Basin.



Lesser Kestrel. Adult. Female (07-VI).

130 Lesser Kestrel

Put your logo here



Lesser Kestrel. 2nd year. Male (12-V).



Lesser Kestrel. 2nd year. Male with female-like pattern (11-VII).



Lesser Kestrel. 2nd year. Female (10-V).



Lesser Kestrel. Juvenile. Male (26-VI).



Lesser Kestrel. Juvenile. Female (26-VI).



Lesser Kestrel. Adult. Head pattern: top male (16-VI); bottom female (07-VI).



Lesser Kestrel. 2nd year. Head pattern: top male (12-V); middle male with female-like pattern (11-VII); bottom female (10-V).



130 Lesser Kestrel

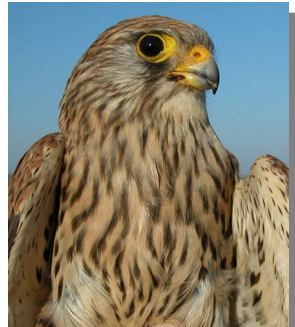
Put your logo here



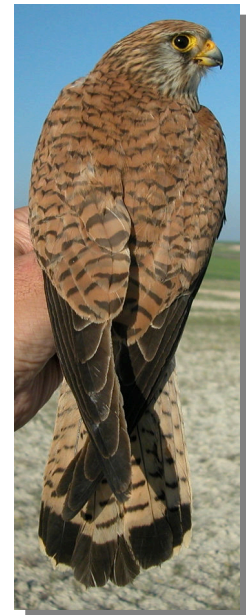
Lesser Kestrel. Juvenile. Head pattern: top male (26-VI); bottom female (26-VI).



Lesser Kestrel. Juvenile. Breast pattern: left male (26-VI); right female (26-VI).



Lesser Kestrel. Adult. Breast pattern: left male (16-VI); right female (07-VI).



Lesser Kestrel. Adult. Upperparts pattern: left male (16-VI); right female (07-VI).



Lesser Kestrel. 2nd year. Breast pattern: top left male (12-V); top right male with female-like pattern (11-VII); left female (10-V).

130 Lesser Kestrel

Put your logo here



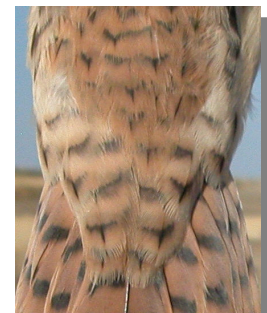
Lesser Kestrel. Adult. Pattern of rump and uppertail coverts: left male (16-VI); right female (07-VI).



Lesser Kestrel. 2nd year. Upperparts pattern: top left male (12-V); top right male with female-like pattern (11-VII); left female (10-V).



Lesser Kestrel. 2nd year. Pattern of rump and uppertail coverts: left male (12-V); right female (10-V).



Lesser Kestrel. Juvenile. Pattern of rump and uppertail coverts: left male (26-VI); right female (26-VI).

Lesser Kestrel. Juvenile. Upperparts pattern: left male (26-VI); right female (26-VI).

130 Lesser Kestrel

Put your logo here



Lesser Kestrel. Adult. Pattern of flank: top male (16-VI); bottom female (07-VI).



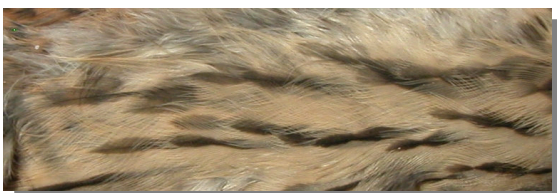
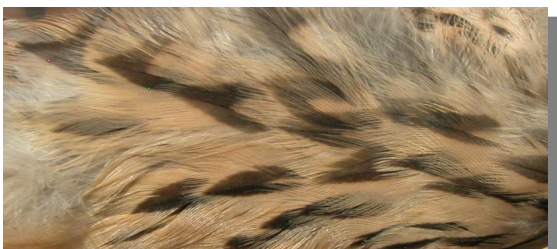
Lesser Kestrel. Adult. Tail pattern: left male (16-VI); right female (07-VI).



Lesser Kestrel. 2nd year. Pattern of flank: top male (12-V); bottom female (10-V).



Lesser Kestrel. 2nd year. Tail pattern: top left male (12-V); top right male with female-like pattern (11-VII); left female (10-V).



Lesser Kestrel. Juvenile. Pattern of flank: topt male (26-VI); bottom female (26-VI).

130 Lesser Kestrel

Put your logo here



Lesser Kestrel. Juvenile. Tail pattern: left male (26-VI); right female (26-VI).



Lesser Kestrel. 2nd year. Male: pattern of primary coverts (12-V).



Lesser Kestrel. Adult. Male: pattern of primary coverts (16-VI).



Lesser Kestrel. 2nd year. Female: pattern of primary coverts (10-V).



Lesser Kestrel. Adult. Female: pattern of primary coverts (07-VI).



Lesser Kestrel. Juvenile. Male: pattern of primary coverts (26-VI).

130 Lesser Kestrel

[Put your logo here](#)



Lesser Kestrel. Juvenile. Female: pattern of primary coverts (26-VI).



Lesser Kestrel. Adult. Male: pattern of primaries (16-VI).



Lesser Kestrel. Adult. Female: pattern of primaries (07-VI).



Lesser Kestrel. 2nd year. Male: pattern of primaries (12-V).



Lesser Kestrel. 2nd year. Female: pattern of primaries (10-V).



Lesser Kestrel. Juvenile. Male: pattern of primaries (26-VI).



Lesser Kestrel. Juvenile. Female: pattern of primaries (26-VI).

130 Lesser Kestrel

Put your logo here



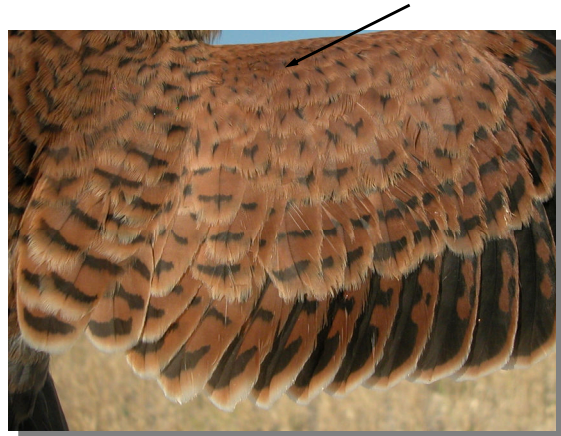
Lesser Kestrel. Adult. Male: pattern of secondaries (16-VI).



Lesser Kestrel. 2nd year. Female: pattern of secondaries (10-V).



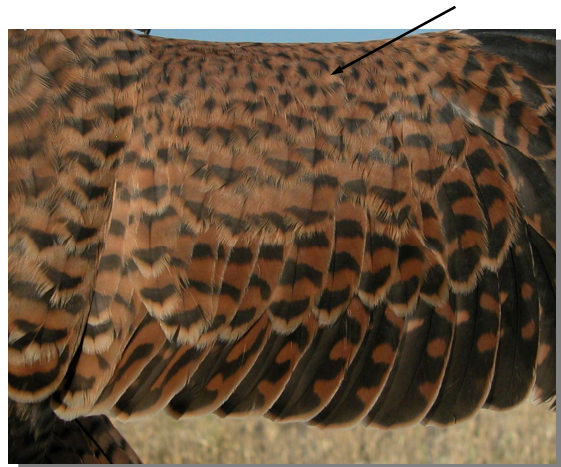
Lesser Kestrel. Adult. Female: pattern of secondaries (07-VI).



Lesser Kestrel. Juvenile. Male: pattern of secondaries (26-VI).



Lesser Kestrel. 2nd year. Male: pattern of secondaries (12-V).



Lesser Kestrel. Juvenile. Female: pattern of secondaries (26-VI).

130 Lesser Kestrel

Put your logo here



Lesser Kestrel. Adult. Male: pattern of wing (16-VI).



Lesser Kestrel. 2nd year. Female: pattern of wing (12-VI).



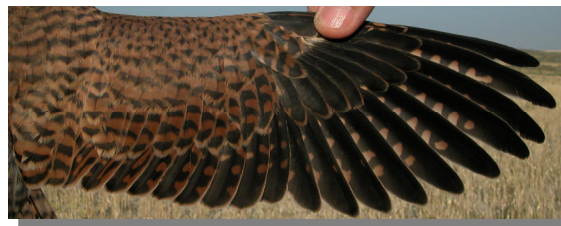
Lesser Kestrel. Adult. Female: pattern of wing (07-VI).



Lesser Kestrel. Juvenile. Male: pattern of wing (26-VI).



Lesser Kestrel. 2nd year. Male: pattern of wing (12-V).



Lesser Kestrel. Juvenile. Female: pattern of wing (26-VI).