

02980 Booted Eagle (*Hieraaetus pennatus*)

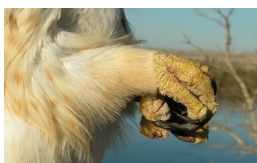


Booted Eagle. Spring. Adult (05-IV).

BOOTED EAGLE (*Hieraaetus pennatus*)

IDENTIFICATION

46-53 cm. With feathered legs to the toes; this eagle has two morphs: the pale morph with white underparts and dark flight feathers; the dark morph with dark brown plumage.



Booted Eagle. Pattern of breast, upperparts and legs.

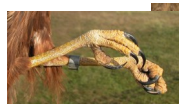


SIMILAR SPECIES

All the brown raptors with similar size lack feathered legs to the toes.



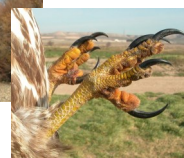
Black Kite.



Marsh Harrier.



Common Buzzard.



SEXING

Both sexes alike in plumage. Both **adult** and **juvenile** birds can be sexed by size in extreme birds: **male** with wing shorter than 370 mm; tail shorter than 195 mm. **Female** with wing longer than 380 mm; tail longer than 205 mm.

AGEING

4 age groups can be recognized:

Juvenile with one age of very fresh plumage; secondaries and tail feathers dark brown almost unbarred; flight feathers with distinct pale edges; dark brown iris.

2nd year with **juvenile** plumage in **spring**; in **autumn**, with a mix of **juvenile** and **adult** feathers on primaries, secondaries and tail.

3rd year only in some birds with retained **juvenile** outermost primaries and central secondaries, which will be very worn.

Adult with secondaries and tail feathers dark brown with distinct barring; flight feathers, when worn, without pale edges; two generations of feathers on wings with adult pattern; reddish iris.

02980 Booted Eagle (*Hieraaetus pennatus*)

Booted Eagle. Ageing. Pattern of tips of greater coverts: top adult; bottom juvenile.

MOULT

Complete **postbreeding** moult, starting in May, arrested during migration and finished in wintering sites. **Postjuvenile** moult starts in **2nd year** with the same strategy than **adults**; some birds may retain some outermost primaries and central secondaries.

PHENOLOGY

I	II	III	IV	V	VI	VII	VIII	IX	X	XI	XII

■ Summer visitor ■ Resident
■ Wintering ■ On passage

PICTURE NOT AVAILABLE

Booted Eagle. Spring. 3rd year ().

PICTURE NOT AVAILABLE

Booted Eagle. Spring. 2nd year ().



PICTURE NOT AVAILABLE

Booted Eagle. Spring. Head pattern: top adult (05-IV); middle 3rd year (); bottom 2nd year ().

PICTURE NOT AVAILABLE

02980 Booted Eagle (*Hieraaetus pennatus*)



PICTURE NOT AVAILABLE



PICTURE NOT AVAILABLE

PICTURE NOT AVAILABLE

Booted Eagle.
Spring. Breast
pattern: top left
adult (05-IV); top
right 3rd year ();
left 2nd year ().

PICTURE NOT AVAILABLE

Booted Eagle.
Spring. Upper-
part pattern: top
left adult (05-
IV); top right 3rd
year (); left 2nd
year ().



PICTURE NOT AVAILABLE

PICTURE NOT AVAILABLE

Booted Eagle.
Spring. Pattern of
rump and uppertail
coverts: top left
adult (05-IV); top
right 3rd year ();
left 2nd year ().

02980 Booted Eagle (*Hieraaetus pennatus*)



PICTURE NOT AVAILABLE

PICTURE NOT AVAILABLE

Booted Eagle.
Spring. Tail pattern: top left adult (05-IV); top right 3rd year (); left 2nd year ().



Booted Eagle. Spring. Adult. Pattern of primary coverts (05-IV).

PICTURE NOT AVAILABLE

Booted Eagle. Spring. 3rd year. Pattern of primary coverts ().

PICTURE NOT AVAILABLE

Booted Eagle. Spring. 2nd year. Pattern of primary coverts ().



Booted Eagle. Spring. Adult. Pattern of underwing coverts (05-IV).

PICTURE NOT AVAILABLE

Booted Eagle. Spring. 3rd year. Pattern of underwing coverts ().

PICTURE NOT AVAILABLE

Booted Eagle. Spring. 2nd year. Pattern of underwing coverts ().



Booted Eagle. Spring. Adult. Pattern of primaries (05-IV).

PICTURE NOT AVAILABLE

PICTURE NOT AVAILABLE

Booted Eagle. Spring. 3rd year. Pattern of primaries ().

PICTURE NOT AVAILABLE

PICTURE NOT AVAILABLE

Booted Eagle. Spring. 2nd year. Pattern of primaries ().



Booted Eagle. Spring. Adult. Pattern of secondaries and wing coverts (05-IV).

PICTURE NOT AVAILABLE



PICTURE NOT AVAILABLE



Booted Eagle. Spring. 3rd year. Pattern of secondaries and wing coverts ().

PICTURE NOT AVAILABLE

PICTURE NOT AVAILABLE

PICTURE NOT AVAILABLE

PICTURE NOT AVAILABLE

Booted Eagle. Spring. 3rd year. Pattern of wing ().

PICTURE NOT AVAILABLE

Booted Eagle. Spring. 2nd year. Pattern of secondaries and wing coverts ().

PICTURE NOT AVAILABLE

Booted Eagle. Spring. 2nd year. Pattern of wing ().

02980 Booted Eagle (*Hieraaetus pennatus*)



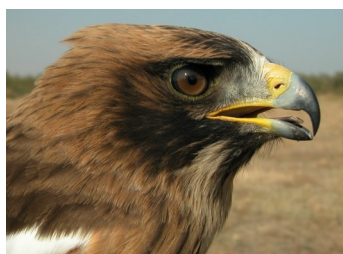
Booted Eagle. Autumn. Adult (08-IX).



Booted Eagle. Autumn. 2nd year (30-VII).



Booted Eagle. Autumn. Juvenile (08-IX).



Booted Eagle. Autumn. Head pattern and iris colour: top adult (08-IX); middle 2nd year (30-VII); bottom juvenile (08-IX).

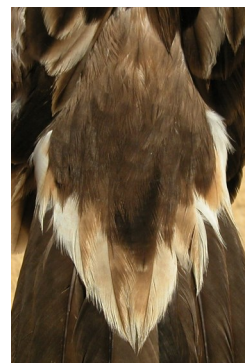


Booted Eagle. Autumn. Breast pattern: top left adult (08-IX); top right 2nd year (30-VII); left juvenile (08-IX).

02980 Booted Eagle (*Hieraaetus pennatus*)



Booted Eagle. Autumn. Upper-part pattern: top left adult (08-IX); top right 2nd year (30-VII); left juvenile (08-IX).



Booted Eagle. Autumn. Pattern of rump and uppertail coverts: top left adult (08-IX); top right 2nd year (30-VII); left juvenile (08-IX).



Booted Eagle. Autumn. Tail pattern: top left adult (08-IX); top right 2nd year (30-VII); left juvenile (08-IX).



Booted Eagle. Autumn. Adult. Pattern of primary coverts (08-IX).



Booted Eagle. Autumn. 2nd year. Pattern of primary coverts (30-VII).



Booted Eagle. Autumn. Juvenile. Pattern of primary coverts (08-IX).



Booted Eagle. Autumn. Adult. Pattern of underwing coverts (08-IX).



Booted Eagle. Autumn. 2nd year. Pattern of underwing coverts (30-VII).



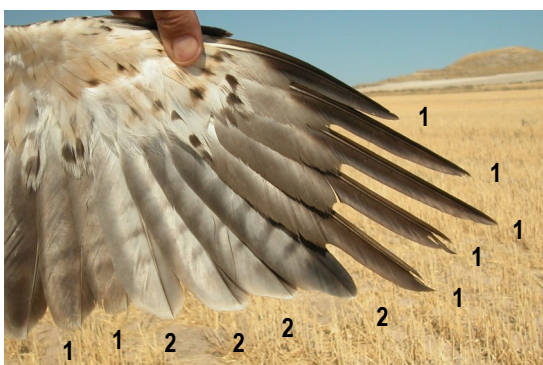
Booted Eagle. Autumn. Juvenile. Pattern of underwing coverts (08-IX).

02980 Booted Eagle (*Hieraaetus pennatus*)



Booted Eagle. Autumn. Adult. Pattern of primaries (08-IX).

Booted Eagle. Autumn. Juvenile. Pattern of primaries (08-IX).



Booted Eagle. Autumn. 2nd year. Pattern of primaries (1 juvenile feather; 2 postjuvenile feather) (30-IX).

Booted Eagle. Autumn. Adult. Pattern of secondaries and wing coverts (08-IX).



Booted Eagle. Autumn. 2nd year. Pattern of secondaries and wing coverts (30-VII).



Booted Eagle. Autumn. Juvenile. Pattern of secondaries and wing coverts (08-IX).



Booted Eagle. Autumn. Adult. Pattern of wing (08-IX).



Booted Eagle. Autumn. 2nd year. Pattern of wing (30-VII).



Booted Eagle. Autumn. Juvenile. Pattern of wing (08-IX).