

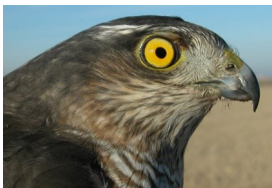


Sparrowhawk. Adult. Male (28-XII).

EURASIAN SPARROWHAWK
(*Accipiter nisus*)

IDENTIFICATION

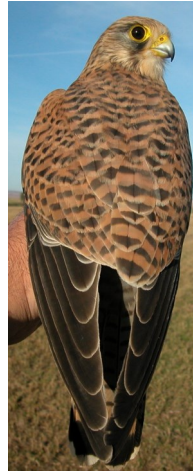
Male: 28-34 cm; **female:** 33-42 cm. Short and rounded wings and long tail; yellow or orange iris; tail with 4-5 dark narrow bands and one broad subterminal band; grey slate upperparts in **adults**, brownish in **juveniles**; underparts barred buff-reddish in **male**, darker in **females** and **juveniles**.



Sparrowhawk. Pattern of tail and head: top male; bottom female.

SIMILAR SPECIES

Kestrel and **Lesser Kestrel** have long tails, but have dark iris and rufous upperparts. **Hobby** and **male Merlin** have grey upperparts, but have pointed wings and dark iris. **Female Sparrowhawk** can be very similar to a **male Goshawk** but has a bigger size; **juvenile Goshawk** has mottled underparts.



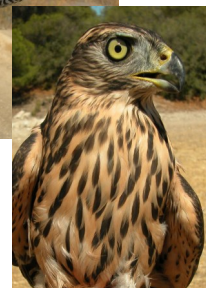
Common Kestrel.



Hobby.



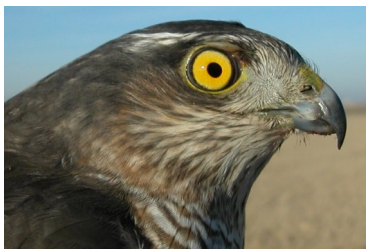
Merlin.



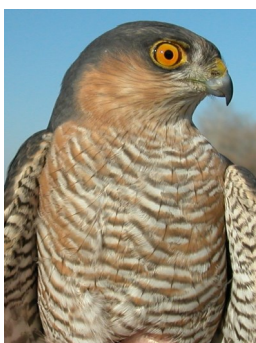
Goshawk. Juvenile and adult.

SEXING

In **adult** birds, **male** with white supercilium subtle or absent; upperparts uniform blue-grey; underparts barred buff-orange; iris bright orange, sometimes reddish; wing shorter than 212 mm; tarsus shorter than 55 mm. **Female** with clear white supercilium; grey to brown upperparts; underparts barred brown grey but sometimes with rufous tinge; iris yellow but light orange in oldest birds; wing longer than 217 mm; tarsus longer than 59 mm. **Juveniles** with plumage of both sexes alike but can be sexed by wing and tarsus length.



Sparrowhawk. Adult. Sexing. Pattern of head: top male;



Sparrowhawk. Adult. Sexing. Pattern of breast: left male; right female.



Sparrowhawk. Adult. Sexing. Pattern of upperparts: top left male; top right female with grey upperparts; left female with brown upperparts.

AGEING

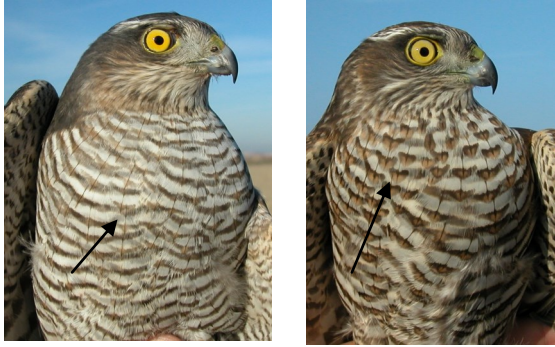
3 age groups can be recognized:

Juvenile with feathers of upperparts and wing coverts dark brown with rufous or buff margin (may be missing by wear); pale underparts with feathers with heart-shaped brown marks on tips; secondaries with narrow dark subterminal bar; iris light yellow; in **spring** may have some moulted feathers on nape and upperparts, which are grey and without buff edge.

2nd year autumn/3rd year spring only if retained dark brown fringed chestnut **juvenile** feathers on scapulars, rump and lesser wing coverts; sometimes tail feathers and secondaries also retained.

Adult with feathers of upperparts and wing coverts without rufous edge; underparts white or reddish tinged uniformly barred; secondaries with broad dark subterminal bar; iris bright yellow or orange.

CAUTION: in birds with body, tail or secondary feathers retained, it will be necessary to know if old feathers are **adult** or **juvenile** in order to correctly assign the age.



Sparrowhawk. Ageing. Pattern of feathers on breast: left adult female; right juvenile.



Sparrowhawk. Ageing. Pattern of upperparts: left adult female; right juvenile.

MOULT

Complete **postbreeding** moult but some specimens may retain feathers on body, tail and secondaries; usually finished in October. **Postjuvenile** moult begins in **2nd year** and is complete, although some **juvenile** feathers may be retained on rump, tail, secondaries and wing coverts.

PHENOLOGY

I	II	III	IV	V	VI	VII	VIII	IX	X	XI	XII

- Summer visitor ■ Resident
- Wintering ■ On passage



Sparrowhawk. Adult. Female (10-XI).



Sparrowhawk. 2nd year. Male (30-XII).



Sparrowhawk. 2nd year. Female (30-XII).

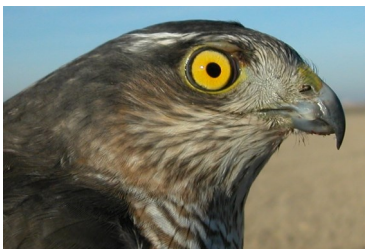
02690 Eurasian Sparrowhawk (*Accipiter nisus*)



Sparrowhawk. Juvenile. Male (10-I).



Sparrowhawk. Juvenile. Female (26-I).



Sparrowhawk. Adult. Head pattern: top male (28-XII); bottom female (10-XI).



Sparrowhawk. 2nd year. Head pattern: top male (30-XII); bottom female (30-XII).



Sparrowhawk. Juvenile. Head pattern: top male (10-I); bottom female (26-I).



Sparrowhawk. Adult. Nape pattern: left male (28-XII); right female (10-XI).



Sparrowhawk. 2nd year. Nape pattern: left male (30-XII); right female (30-XII).



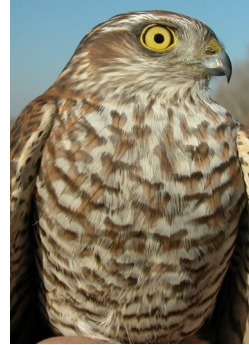
Sparrowhawk. Juvenile. Nape pattern: left male (10-I); right female (26-I).



Sparrowhawk. Adult. Breast pattern: left male (28-XII); right female (10-XI).



Sparrowhawk. 2nd year. Breast pattern: left male (30-XII); right female (30-XII).



Sparrowhawk. Juvenile. Breast pattern: left male (10-I); right female (26-I).



Sparrowhawk. Adult. Upperpart pattern: left male (28-XII); right female (10-XI).



Sparrowhawk. 2nd year. Upperpart pattern: left male (30-XII); right female (30-XII).



Sparrowhawk. Juvenile. Upperpart pattern: left male (10-I); right female (26-I).



Sparrowhawk. Adult. Rump pattern: left male (28-XII); right female (10-XI).



Sparrowhawk. 2nd year. Rump pattern: left male (30-XII); right female (30-XII).



Sparrowhawk. Juvenile. Rump pattern: left male (10-I); right female (26-I).



Sparrowhawk. Adult. Tail pattern: left male (28-XII); right female (10-XI).



Sparrowhawk. 2nd year. Tail pattern: left male (30-XII); right female (30-XII).



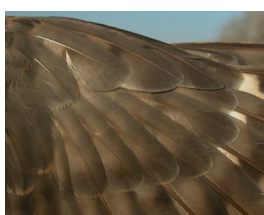
Sparrowhawk. Juvenile. Tail pattern: left male (10-I); right female (26-I).



Sparrowhawk. Adult. Pattern of primary covers: left male (28-XII); right female (10-XI).



Sparrowhawk. 2nd year. Pattern of primary covers: left male (30-XII); right female (30-XII).



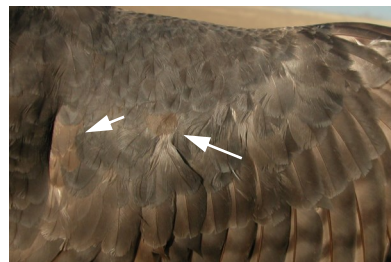
Sparrowhawk. Juvenile. Pattern of primary covers: left male (10-I); right female (26-I).



S p a -
r r o w h a w k .
A d u l t . P a t -
t e r n o f w i n g
c o v e r t s : t o p
m a l e (2 8 -
X I I) ; b o t t o m
f e m a l e (1 0 -
X I) .



S p a -
r r o w h a w k .
2 n d y e a r .
P a t t e r n o f
w i n g c o v e r t s :
t o p m a l e (3 0 -
X I I) ; b o t t o m
f e m a l e (3 0 -
X I I) .



S p a -
r r o w h a w k .
J u v e n i l e .
P a t t e r n o f
w i n g c o v e r t s :
t o p m a l e (1 0 -
I) ; b o t t o m
f e m a l e (2 6 -
I) .



Sparrowhawk. Adult. Male: pattern of primaries (28-XII).

Sparrowhawk. 2nd year. Male: pattern of primaries (30-XII).



Sparrowhawk. Adult. Female: pattern of primaries (10-XI).

Sparrowhawk. 2nd year. Female: pattern of primaries (30-XII).



Sparrowhawk. Juvenile. Male: pattern of primaries (10-I).



Sparrowhawk. Juvenile. Female: pattern of primaries (26-I).



Sparrowhawk. Adult. Male: pattern of secondaries and wing coverts (28-XII).



Sparrowhawk. Adult. Female: pattern of secondaries and wing coverts (10-XI).



Sparrowhawk. 2nd year. Male: pattern of secondaries and wing coverts (30-XII).



Sparrowhawk. 2nd year. Female: pattern of secondaries and wing coverts (30-XII).

<http://blascozumeta.com>



Sparrowhawk. Juvenile. Male: pattern of secondaries and wing coverts (10-I).



Sparrowhawk. Juvenile. Female: pattern of secondaries and wing coverts (26-I).

<http://www.aranzadi.eus>



Sparrowhawk. Adult. Male: pattern of wing (28-XII).



Sparrowhawk. Adult. Female: pattern of wing (10-XI).



Sparrowhawk. 2nd year. Male: pattern of wing (30-XII).



Sparrowhawk. 2nd year. Female: pattern of wing (30-XII).



Sparrowhawk. Juvenile. Male: pattern of wing (10-I).



Sparrowhawk. Juvenile. Female: pattern of wing (26-I).