

115 Montagu's Harrier

Put your logo here

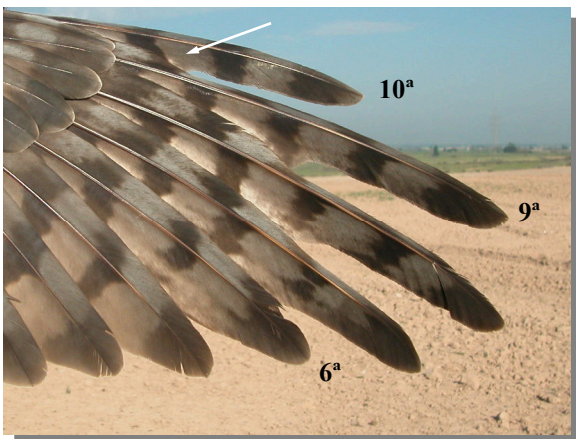


Montagu's Harrier. Adult. Male (25-IV)

MONTAGU'S HARRIER (*Circus pygargus*)

IDENTIFICATION

41-46 cm. **Adult male** with grey head and upperparts; underparts grey on breast and white on vent; black primaries and secondaries with a black band; grey tail; pale rump. **Adult female** with dark brown upperparts; underparts light brown with dark streaked; white rump poorly defined; dark barred tail and wings. **Juvenile** similar to **female**, but with unstreaked reddish underparts. Length of 10th primary similar to 6th; the beginning of emargination of 9th primary is not hidden by primary coverts.



Montagu's Harrier. Adult. Female. Wing formula: emargination of 9th primary not hidden by primary coverts; length of 10th primary similar to 6th.



Montagu's Harrier. Adult. Male: pattern of wing.

SIMILAR SPECIES

Adult **male** similar to male of **Hen Harrier**, with bigger white rump and without a dark wing bar and without streaks on flanks and vent. **Females** of **Hen Harrier** have whiter rump and haven't a band just below the wing coverts; length of 10th primary between 5th and 6th; the beginning of emargination of 9th primary hidden by primary coverts. **Female** and **juveniles** of **Marsh Harrier** have a pale patch on head and throat.



Marsh Harrier.



Hen Harrier. Male.



Hen Harrier. Female

MOULT

Complete **postbreeding** moult starting in breeding places, suspended during migration and finished in wintering sites. **Postjuvenile** moult starts in **1st winter** involving body feathers, some wing coverts and sometimes some tail feathers; the first complete moult takes place in autumn of the **2nd year** at the same time as **adults**.

115 Montagu's Harrier

Put your logo here

AGEING/SEXING

4 age groups can be recognized in **females** and 5 in **males**:

Juvenile with ochre unstreaked underparts but sometimes with thin dark streaked on upper-breast; upperwing coverts edged with intense ochre; secondaries deeply dark above and below; fresh plumage without moult limits. **Male** with grey iris and underside of outer primaries with dark spotted; **female** with dark brown iris and underside of outer primaries with dark barred.

2nd year male with dark yellow iris; breast tinged grey; if central tail feathers are moulted, then uniformly grey; underwing coverts richly patterned with chestnut red mottled.

2nd year female with dark brown iris; upper-breast streaked but belly still juvenile and unstreaked; if tail feathers are moulted, then dark brown and banded.

CAUTION: both sexes with all flight feathers **juvenile** but in autumn, when moult has started, with a mix of fresh **adult** and old **juvenile** flight feathers.

3rd year male similar to **adults** but upperparts and wing coverts dull grey with brownish tinge; sometimes with some retained brown **juvenile** feathers on head or rump; outer tail feathers with broad and chestnut red mottled; lower breast with broad and lanceolated streaks; underwing coverts quite patterned with chestnut red mottled, covering more of the white ground colour than in **old males**.

3rd year female usually with brown or amber iris; dark upperparts; head dark with contrasted pattern like **juveniles**; central tail feathers brownish rather than grey, with inconspicuous barring; outer tail feathers with pale chestnut red bars; wing feathers quite similar to **adult female**; underbody light ochre with rusty brown streaks on breast.

4th year only in some **males** with a slight brown tinge on nape.

Adult male with bright yellow iris; without brown feathers on nape or rump; upperparts and wing coverts uniform ashy-grey; secondaries and inner primaries grey; outer primaries black; central tail feathers silver-grey; outer tail feathers with slightly marked bars; upper breast unstreaked grey, lower with narrow streaked; underwing coverts slightly patterned with chestnut red mottled.

Adult female with yellow iris; upperparts pale grey-brown; pale and uniformly streaked head; primaries and central tail feathers with grey tinge and distinct barring; from below, secondaries with the same pattern than primaries and distinct barred; underparts pale ochre with dark brown streaks on breast.

PHENOLOGY

I	II	III	IV	V	VI	VII	VIII	IX	X	XI	XII

STATUS IN ARAGON

Summer visitor. Widely distributed throughout the Region, absent in forested and mountainous areas.



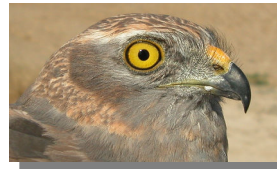
Montagu's Harrier. Sexing in juveniles. Pattern of barred on underside of outer primaries and iris colour: top male (10-VII); bottom female (06-IX).

115 Montagu's Harrier

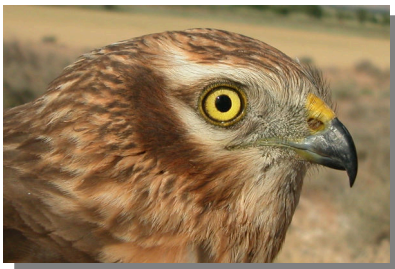
[Put your logo here](#)



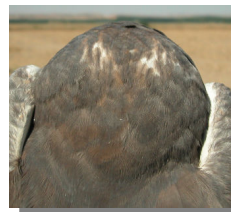
Montagu's Harrier. Ageing. Female. Pattern of breast: left adult; right juvenile.



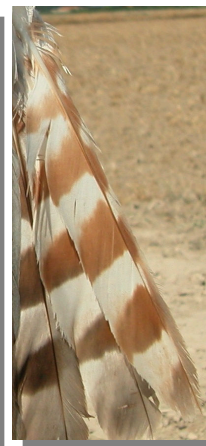
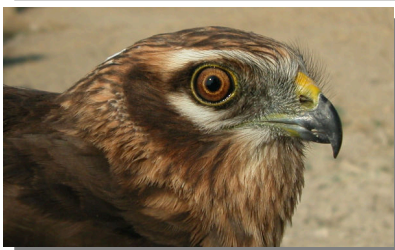
Montagu's Harrier. Ageing. Male. Pattern of head: top left adult; top right 3rd year; left 2nd year.



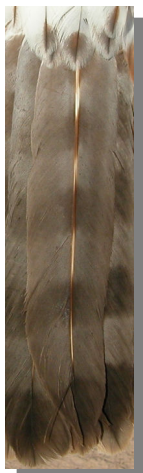
Montagu's Harrier. Ageing. Female. Colour of iris: top adult; middle 3rd year; bottom 2nd year.



Montagu's Harrier. Ageing. Male. Pattern of nape: top left adult; top right 4th year; left 3rd year.



Montagu's Harrier. Ageing. Male. Pattern of the outermost tail feather: left adult; middle 3rd year; right juvenile.



Montagu's Harrier. Ageing. Female. Pattern of the central tail feather: left adult; middle 3rd year; right juvenile.

115 Montagu's Harrier

[Put your logo here](#)



Montagu's Harrier. Ageing. Male. Pattern of the underwing coverts: top adult; bottom 3rd year.



Montagu's Harrier. 3rd year. Female (30-V)



Montagu's Harrier. Adult. Female (14-V)



Montagu's Harrier. 2nd year. Male (26-VI)



Montagu's Harrier. 4th year. Male (13-VI)



Montagu's Harrier. 2nd year. Female (26-VI)



Montagu's Harrier. 3rd year. Male (26-VI)



Montagu's Harrier. Juvenile. Male (10-VII)

115 Montagu's Harrier

Put your logo here



Montagu's Harrier. Juvenile. Female (06-IX)



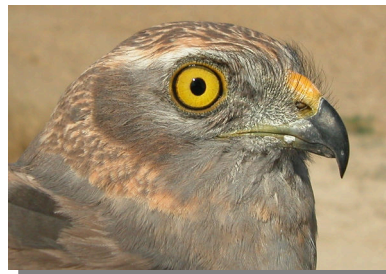
Montagu's Harrier. 3rd year. Head pattern and iris colour: top male (26-VI); bottom female (30-V).



Montagu's Harrier. 2nd year. Head pattern and iris colour: top male (26-VI); bottom female (26-VI).



Montagu's Harrier. Adult. Head pattern and iris colour: top male (25-IV); bottom female (14-V).



Montagu's Harrier. Juvenile. Head pattern and iris colour: top male (10-VII); bottom female (06-IX).



Montagu's Harrier. 4th year. Male: head pattern and iris colour (13-VI).

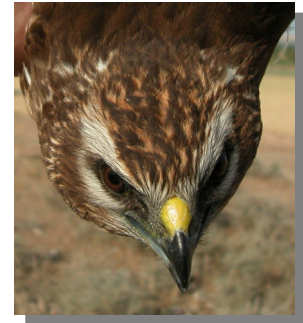


115 Montagu's Harrier

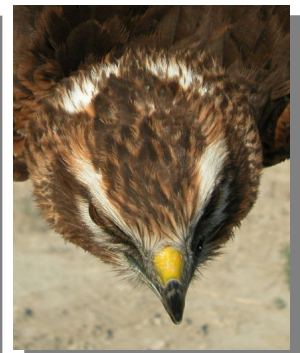
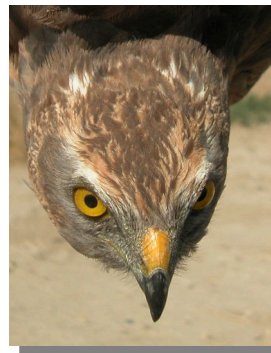
Put your logo here



Montagu's Harrier. Nestling. Head pattern and iris colour: top male (24-VII); bottom female (24-VII).



Montagu's Harrier. 3rd year. Crown pattern: left male (26-VI); right female (30-V).



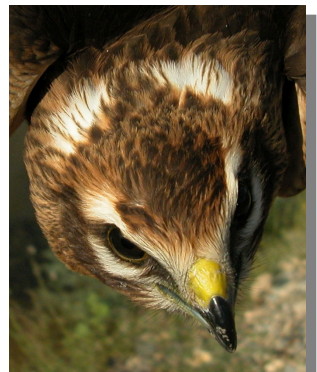
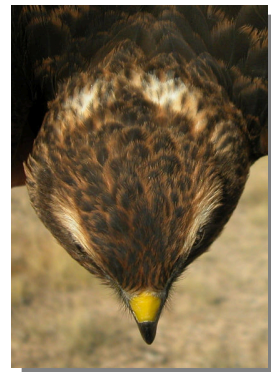
Montagu's Harrier. 2nd year. Crown pattern: left male (26-VI); right female (26-VI).



Montagu's Harrier. Adult. Crown pattern: left male (25-IV); right female (14-V).



Montagu's Harrier. 4th year. Male: crown pattern (13-VI).



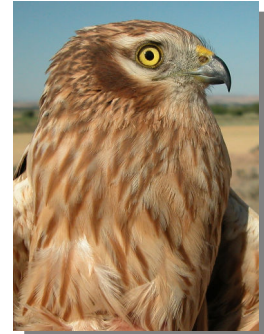
Montagu's Harrier. Juvenile. Crown pattern: left male (10-VII); right female (06-IX).

115 Montagu's Harrier

Put your logo here



Montagu's Harrier. Adult. Nape pattern: left male (25-IV); right female (14-V).



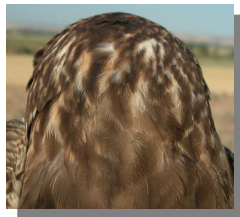
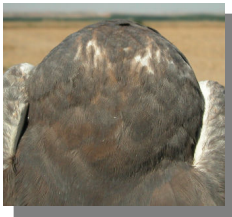
Montagu's Harrier. Adult. Breast pattern: left male (25-IV); right female (14-V).



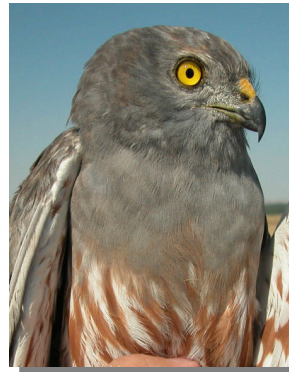
Montagu's Harrier. 4th year. Male: nape pattern (13-VI).



Montagu's Harrier. 4th year. Male: breast pattern (13-VI).



Montagu's Harrier. 3rd year. Nape pattern: left male (26-VI); right female (30-V).



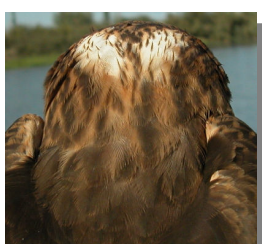
Montagu's Harrier. 3rd. Breast pattern: left male (26-VI); right female (30-V).



Montagu's Harrier. 2nd year. Nape pattern: left male (26-VI); right female (26-VI).



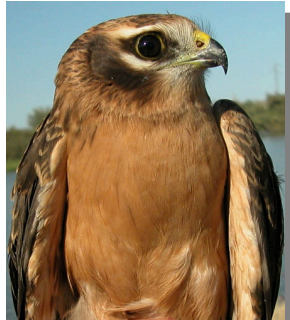
Montagu's Harrier. 2nd year. Breast pattern: left male (26-VI); right female (26-VI).



Montagu's Harrier. Juvenile. Nape pattern: left male (10-VII); right female (06-IX).

115 Montagu's Harrier

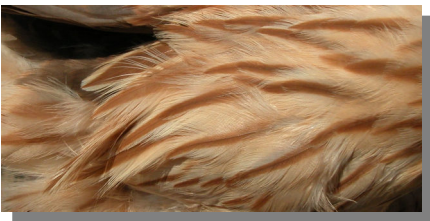
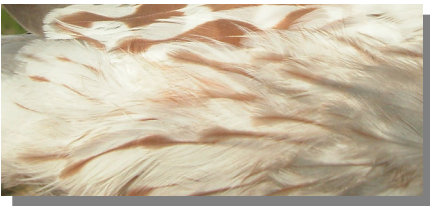
Put your logo here



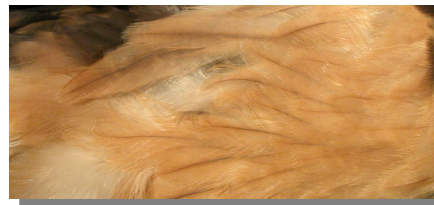
Montagu's Harrier. Juvenile. Breast pattern: left male (10-VII); right female (06-IX).



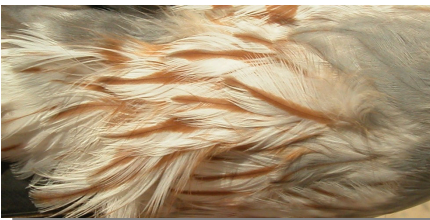
Montagu's Harrier. 2nd year. Flank pattern: top male (26-VI); bottom female (26-VI).



Montagu's Harrier. Adult. Flank pattern: top male (25-IV); bottom female (14-V).



Montagu's Harrier. Juvenile. Flank pattern: top male (10-VII); bottom female (06-IX).



Montagu's Harrier. 4th year. Male: flank pattern (13-VI).



Montagu's Harrier. 3rd year. Flank pattern: top male (26-VI); bottom female (30-V).



Montagu's Harrier. Adult. Upperparts pattern: left male (25-IV); right female (14-V).

115 Montagu's Harrier

Put your logo here



Montagu's Harrier.
4th year.
Male: upperparts
pattern (13-VI).



Montagu's Harrier. 2nd year. Upperpart pattern: left male (26-VI); right female (26-VI).



Montagu's Harrier. 3rd year. Upperpart pattern: left male (26-VI); right female (30-V).



Montagu's Harrier. Juvenile. Upperpart pattern: left male (10-VII); right female (06-IX).

115 Montagu's Harrier

Put your logo here



Montagu's Harrier. Adult. Rump pattern: left male (25-IV); right female (14-V).



Montagu's Harrier. Juvenile. Rump pattern: left male (10-VII); right female (06-IX).



Montagu's Harrier.
4th year.
Male:
rump pattern (13-VI).



Montagu's Harrier. Adult. Male: tail pattern (25-IV).



Montagu's Harrier. 3rd year. Rump pattern: left male (26-VI); right female (30-V).



Montagu's Harrier. Adult. Female: tail pattern (14-V).



Montagu's Harrier. 2nd year. Rump pattern: left male (26-VI); right female (26-VI).

115 Montagu's Harrier

Put your logo here



Montagu's Harrier. 4th year. Male: tail pattern (13-VI).



Montagu's Harrier. 2nd year. Male: tail pattern ().



Montagu's Harrier. 3rd year. Male: tail pattern (26-VI).



Montagu's Harrier. 2nd year. Female: tail pattern (26-VI).



Montagu's Harrier. 3rd year. Female: tail pattern (30-V).



Montagu's Harrier. Juvenile. Male: tail pattern (10-VII).

115 Montagu's Harrier

Put your logo here



Montagu's Harrier. Juvenile. Female: tail pattern (06-IX).



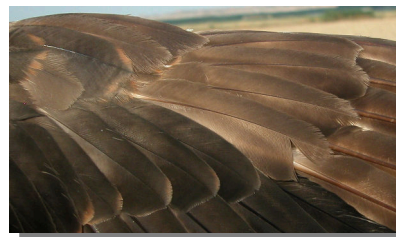
Montagu's Harrier. 3rd year. Pattern of primary coverts: top male (26-VI); bottom female (30-V).



Montagu's Harrier. Adult. Pattern of primary coverts: top male (25-IV); bottom female (14-V).



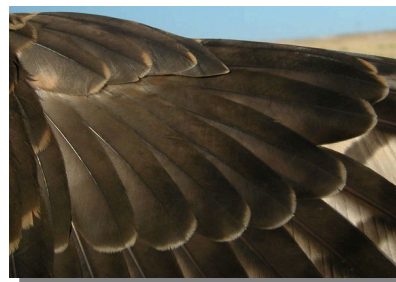
Montagu's Harrier. 2nd year. Pattern of primary coverts: top male (26-VI); bottom female (26-VI).



Montagu's Harrier. 4th year. Male: pattern of primary coverts (13-VI).



Montagu's Harrier. Juvenile. Pattern of primary coverts: top male (10-VII); bottom female (06-IX).

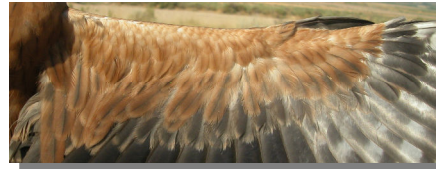


115 Montagu's Harrier

Put your logo here



Montagu's Harrier. Adult. Pattern of underwing coverts: top male (25-IV); bottom female (14-V).



Montagu's Harrier. Juvenile. Pattern of underwing coverts: top male (10-VII); bottom female (06-IX).



Montagu's Harrier. 4th year. Male: pattern of underwing coverts (13-VI).



Montagu's Harrier. 3rd year. Pattern of underwing coverts: top male (26-VI); bottom female (30-V).



Montagu's Harrier. Adult. Male: pattern of primaries (25-IV).



Montagu's Harrier. 2nd year. Pattern of underwing coverts: top male (26-VI); bottom female (26-VI).



Montagu's Harrier. Adult. Female: pattern of primaries (14-V).

115 Montagu's Harrier

Put your logo here



Montagu's Harrier. 4th year. Male: pattern of primaries (13-VI).

Montagu's Harrier. 3rd year. Female: pattern of primaries (30-V).



Montagu's Harrier. 3rd year. Male: pattern of primaries (26-VI).

Montagu's Harrier. 2nd year. Male: pattern of primaries (26-VI).

115 Montagu's Harrier

Put your logo here



Montagu's Harrier. 2nd year. Female: pattern of primaries (26-VI).

Montagu's Harrier. Juvenile. Female: pattern of primaries (06-IX).



Montagu's Harrier. Juvenile. Male: pattern of primaries (10-VII).

Montagu's Harrier. Adult. Male: pattern of secondaries (25-IV).

115 Montagu's Harrier

Put your logo here



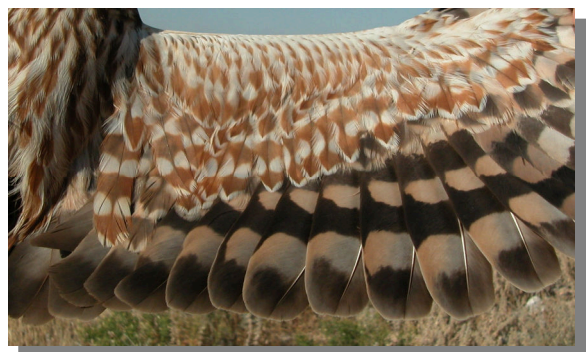
Montagu's Harrier. Adult. Female: pattern of secondaries (14-V).



Montagu's Harrier. 3rd year. Male: pattern of secondaries (26-VI).



Montagu's Harrier. 4th year. Male: pattern of secondaries (13-VI).



Montagu's Harrier. 3rd year. Female: pattern of secondaries (30-V).

115 Montagu's Harrier

Put your logo here



Montagu's Harrier. 2nd year. Male: pattern of secondaries (26-VI).

Montagu's Harrier. Juvenile. Male: pattern of secondaries (10-VII).

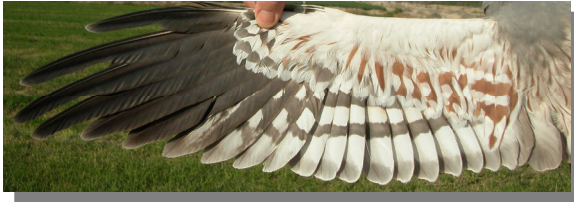


Montagu's Harrier. 2nd year. Female: pattern of secondaries (26-VI).

Montagu's Harrier. Juvenile. Female: pattern of secondaries (06-IX).

115 Montagu's Harrier

Put your logo here



Montagu's Harrier. Adult. Male: pattern of wing (25-IV).



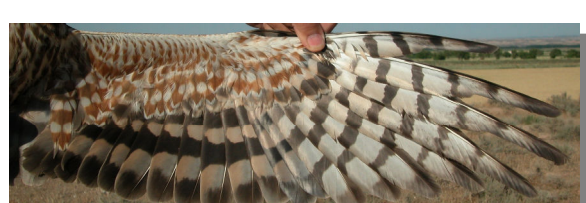
Montagu's Harrier. Adult. Female: pattern of wing (14-V).



Montagu's Harrier. 4th year. Male: pattern of wing (13-VI).



Montagu's Harrier. 3rd year. Male: pattern of wing (26-VI).



Montagu's Harrier. 3rd year. Female: pattern of wing (30-V).



Montagu's Harrier. 2nd year. Male: pattern of wing (26-VI).

115 Montagu's Harrier

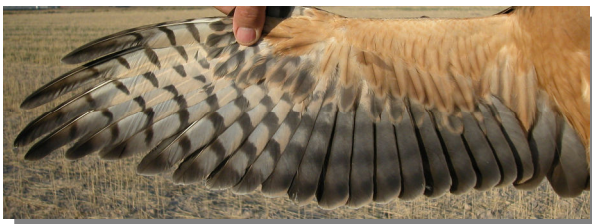
[Put your logo here](#)



Montagu's Harrier. 2nd year. Female: pattern of wing (26-VI).



Montagu's Harrier. Juvenile. Male: pattern of wing (10-VII).



Montagu's Harrier. Juvenile. Female: pattern of wing (06-IX).