

# 108 Egyptian Vulture

Put your logo here



Egyptian Vulture. Adult (14-III).

**EGYPTIAN VULTURE** (*Neophron percnopterus*)

## IDENTIFICATION

58-70 cm. **Adult** white, with black feathers on wings; head and throat unfathered, with yellow skin. **Juvenile** dark brown.

## SIMILARE SPECIES

This species is unmistakable

## SEXING

Plumage and size of both sexes alike

## MOULT

Partial **postbreeding** moult, with not all flight feathers changed every year; moult period begins after breeding to be arrested before migration and finished in wintering sites. **Postjuvenile** moult begins in **2nd year** retaining some flight feathers which will be changed in **3rd year**; moult between March and November.

## STATUS IN ARAGON

Summer visitor, distributed throughout open landscapes if food and cliffs for breeding are present.

## AGEING

5 age groups can be recognized (**CAUTION**: there are individual factors (different metabolism, food availability, date of birth, e.g.) causing that moult in a so big birds no always fit exactly the annual cycle described here):

**Juvenile** with bluish face skin; wing and tail feathers with the same age; plumage dark brown; body feathers with brown-grey mottled; wing coverts with pale tips; tail feathers brown with pale tip.

**2nd year autumn/3rd year spring** similar to **juvenile**, but with two ages of flight feathers; underparts with contrast between dark flanks and paler vent; face skin like **juveniles**.

**3rd year autumn/4th year spring** with some white feathers on underparts and underwing coverts; ruff with white feathers; grey-buff tail with pale edges; face skin like **juveniles** but with yellowish base of bill.

**4th year autumn/5th year spring** quite similar to **adult** but underwing coverts with white and brown feathers; tail with white and greyish feathers admixed; body feathers and wing coverts with some brown feathers.

**Adult** with yellow face skin; body feathers white; black inner greater coverts and primaries; all white ruff.

**NOTE:** all the photographic report has been made for several years in a row on a single specimen deposited at the Centre de Fauna de Vallcalent (Lleida).

## PHENOLOGY

I	II	III	IV	V	VI	VII	VIII	IX	X	XI	XII



Egyptian Vulture. 4th year autumn (15-IX).



# 108 Egyptian Vulture

Put your logo here



Egyptian Vulture. 3rd year autumn (10-IX).



Egyptian Vulture. 2nd year autumn (26-VII).



Egyptian Vulture. Juvenile (01-XI).



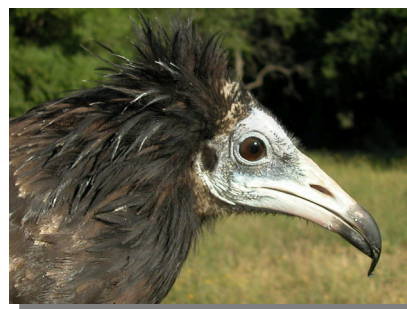
Egyptian Vulture.  
Adult: pattern of head (14-III).



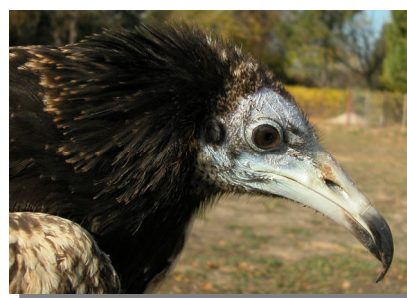
Egyptian Vulture.  
4th year autumn: pattern of head (15-IX).



Egyptian Vulture.  
3rd year autumn: pattern of head (10-IX).



Egyptian Vulture.  
2nd year autumn: pattern of head (26-VII).

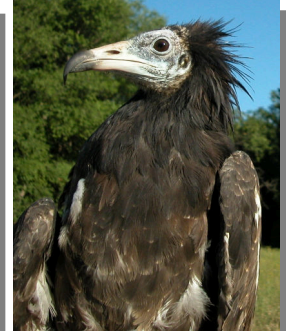
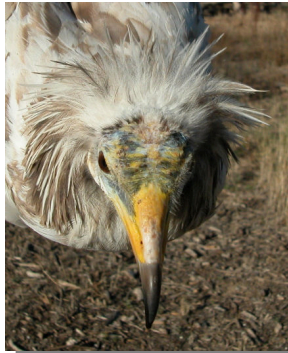


Egyptian Vulture.  
Juvenile: pattern of head (01-XI).

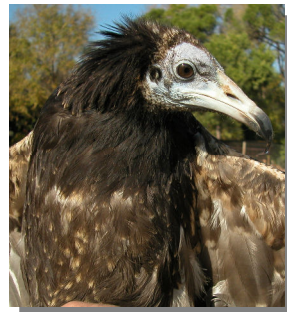
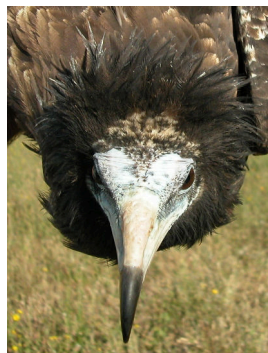


# 108 Egyptian Vulture

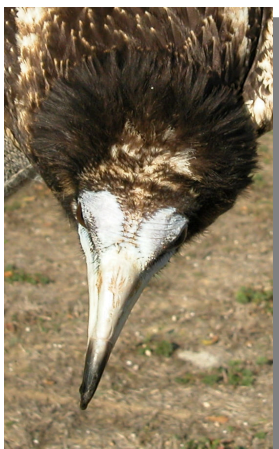
Put your logo here



Egyptian Vulture. Crown pattern: left adult (14-III); right 4th year autumn (15-IX).



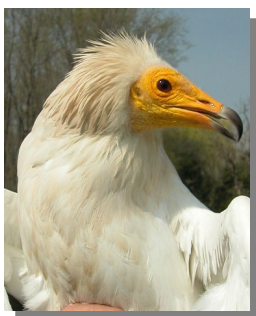
Egyptian Vulture. Breast pattern: top left 3rd year autumn (14-III); top right 2nd year autumn (10-IX); left juvenile (01-XI).



Egyptian Vulture. Crown pattern: top left 3rd year autumn (14-III); top right 2nd year autumn (10-IX); left juvenile (01-XI).



Egyptian Vulture. Upperpart pattern: left adult (14-III); right 4th year autumn (15-IX).



Egyptian Vulture. Breast pattern: left adult (14-III); right 4th year autumn (15-IX).



# 108 Egyptian Vulture

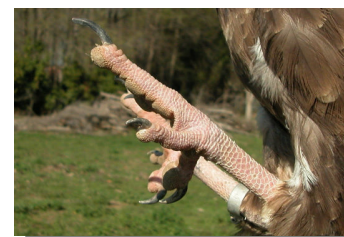
Put your logo here



Egyptian Vulture. Tail pattern: top left 3rd year autumn (14-III); top right 2nd year autumn (10-IX); left juvenile (01-XI).



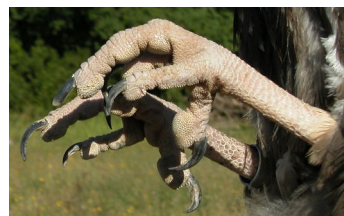
Egyptian Vulture. Upperpart pattern: top left 3rd year autumn (14-III); top right 2nd year autumn (10-IX); left juvenile (01-XI).



Egyptian Vulture. Tail pattern. From top to bottom: adult (14-III); 4th year autumn (15-IX); 3rd year autumn (10-IX); 2nd year autumn (26-VII); juvenile (01-XI).



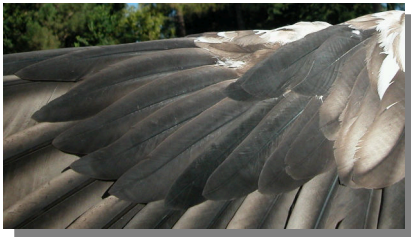
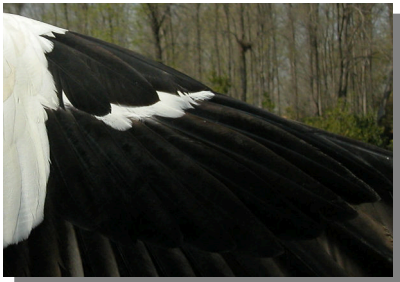
Egyptian Vulture. Tail pattern: left adult (14-III); right 4th year autumn (15-IX).





# 108 Egyptian Vulture

Put your logo here



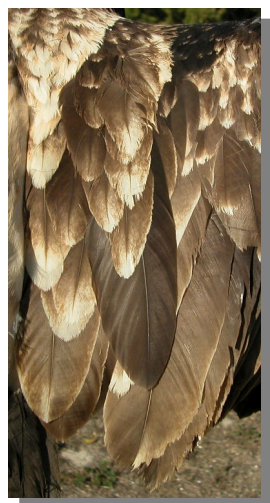
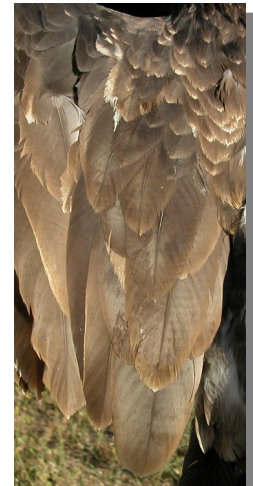
Egyptian Vulture. Pattern of primary coverts: top adult (14-III); bottom 4th year autumn (15-IX).



Egyptian Vulture. Pattern of tertials: left adult (14-III); right 4th year autumn (15-IX).



Egyptian Vulture. Pattern of primary coverts: top 3rd year autumn (10-IX); middle 2nd year autumn (26-VII); bottom juvenile (01-XI).



Egyptian Vulture. Pattern of tertials: top left 3rd year autumn (10-IX); top right 2nd year autumn (26-VII); left juvenile (01-XI).



## 108 Egyptian Vulture

Put your logo here



Egyptian Vulture. Adult: pattern of underwing coverts (14-III).



Egyptian Vulture. 4th year autumn: pattern of underwing coverts (15-IX).



Egyptian Vulture. Adult: pattern of primaries (14-III).



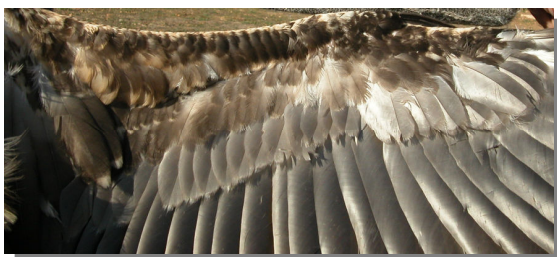
Egyptian Vulture. 3rd year autumn: pattern of underwing coverts (10-IX).



Egyptian Vulture. 2nd year autumn: pattern of underwing coverts (26-VII).



Egyptian Vulture. 4th year autumn: pattern of primaries (15-IX).



Egyptian Vulture. Juvenile: pattern of underwing coverts (01-XI).



# 108 Egyptian Vulture

Put your logo here



Egyptian Vulture. 3rd year autumn: pattern of primaries (10-IX).

Egyptian Vulture. Juvenile: pattern of primaries (01-XI).



Egyptian Vulture. 2nd year autumn: pattern of primaries (26-VII).



Egyptian Vulture. Adult: pattern of secondaries (14-III).



# 108 Egyptian Vulture

Put your logo here



Egyptian Vulture. 4th year autumn: pattern of secondaries (15-IX).



Egyptian Vulture. 3rd year autumn: pattern of secondaries (10-IX).



Egyptian Vulture. 2nd year autumn: pattern of secondaries (26-VII).



Egyptian Vulture. Juvenile: pattern of secondaries (01-XI).



# 108 Egyptian Vulture

Put your logo here



Egyptian Vulture. Adult: pattern of wing (14-III).



Egyptian Vulture. 2nd year autumn: pattern of wing (26-VII).



Egyptian Vulture. 4th year autumn: pattern of wing (15-IX).



Egyptian Vulture. Juvenile: pattern of wing (01-XI).



Egyptian Vulture. 3rd year autumn: pattern of wing (10-IX).