



Honey Buzzard. Adult. Female (04-IX).

EUROPEAN HONEY BUZZARD (*Pernis apivorus*)

IDENTIFICATION

51-58 cm. Brown upperparts; pale underparts, with dark mottled; dark brown upperwing and pale underwing; dark bill; yellow eye.



Honey Buzzard. Adult.
Colour of bill and female
tail feathers.

SIMILAR SPECIES

Very similar to **Common Buzzard**, which has brown eyes. **Booted Eagle** lacks the black patch in the middle of undewing and has feathers on tarsus. **Red Kite** and **Black Kite** has forked tails.



Common Buzzard.



Booted Eagle.



Black Kite.



Red Kite.

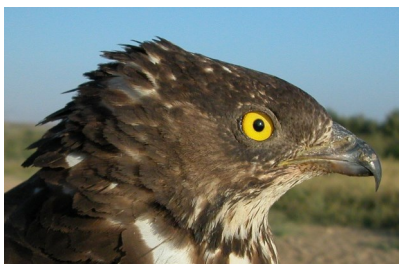
SEXING

Male with grey head; upperparts tinged grey; black under outer primaries restricted to base with clear and contrasted limit with light part; secondaries with a broad non-banded space in the middle of the feather; tail feathers greyish above with broad light brown area before dark subterminal band; wing shorter than 395 mm. **Female** with brownish head, sometimes with grey around the eye; brown upperparts; black under outer primaries without clear contrasted limit with white base; secondaries with bars in the middle of the feather; tail feathers with bands regularly spaced with a broad band at half-feather; wing longer than 435 mm. **Juveniles** cannot be sexed using plumage pattern.

02310 European Honey Buzzard (*Pernis apivorus*)



Honey Buzzard. Adult. Sexing. Pattern of head: top male; bottom female.



Honey Buzzard. Adult. Sexing. Pattern of tail feathers: left male; right female.



Honey Buzzard. Adult. Sexing. Pattern of secondaries: left male; right female.

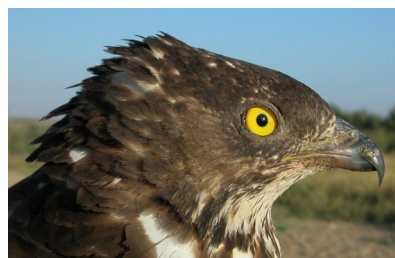
AGEING

3 age groups can be recognized:

Juvenile with fresh plumage without moult traces; iris dark; cere and bill base yellow with black only at bill tip; black under outer primaries including tip and digital part; secondaries with dark regular and sparse barring; dark tail feathers usually with numerous bars regularly spaced (**CAUTION**: some birds with bars similar to adult or even with nearly invisible bars).

2nd year spring with some **juvenile** outer primaries and/or tail feathers retained. Usually they remain in wintering sites.

Adult with yellow iris; cere and bill dark; black under outer primaries only on tips (see **SEXING**); secondaries with a broad dark subterminal bar; pale tail feathers with clearly defined and sparse bars.



Honey Buzzard. Adult. Ageing. Colour of the eye and bill: top adult female; bottom juvenile.



Honey Buzzard. Ageing/sexing. Dark under the outermost primary: top adult male; middle adult female; bottom juvenile.

02310 European Honey Buzzard (*Pernis apivorus*)

Honey Buzzard. Adult. Ageing. Pattern of the central tail feather: left adult female; right juvenile.



Honey Buzzard. Adult. Ageing. Pattern of secondaries: left adult female; right juvenile.

MOULT

Complete **postbreeding** moult started in breeding areas, suspended during migration and finished in wintering sites. **Postjuvenile** moult starts in **spring** of **2nd year** usually remaining in wintering quarters.

PHENOLOGY

I	II	III	IV	V	VI	VII	VIII	IX	X	XI	XII

■ Summer visitor ■ Resident
■ Wintering ■ On passage



Honey Buzzard. Adult. Male (14-III).



Honey Buzzard. 2nd year (14-III).



Honey Buzzard. Juvenile (26-X) (Photo: Vincent van der Spek/Turnstones.org).

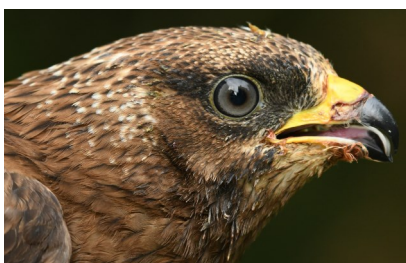
02310 European Honey Buzzard (*Pernis apivorus*)



Honey Buzzard. Adult. Head pattern and iris colour: top male (14-III); bottom female (04-IX).



Honey Buzzard. Head pattern and iris colour: top 2nd year (14-III); bottom juvenile (26-X) (Photo: Vincent van der Spek / Turnstones.org).



Honey Buzzard. Adult. Breast pattern: left male (14-III); right female (04-IX).



PICTURE NOT AVAILABLE

Honey Buzzard. Breast pattern: left 2nd year (14-III); right juvenile ().



Honey Buzzard. Adult. Upperpart pattern: left male (14-III); right female (04-IX).



PICTURE NOT AVAILABLE

Honey Buzzard. Upperpart pattern: left 2nd year (14-III); right juvenile ().

02310 European Honey Buzzard (*Pernis apivorus*)



Honey Buzzard. Adult. Tail pattern: left male (14-III); right female (04-IX).

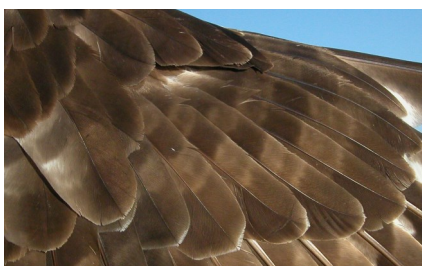


PICTURE NOT AVAILABLE

Honey Buzzard. Tail pattern: left 2nd year (14-III); right juvenile ().



Honey Buzzard. Adult. Male: pattern of primary coverts (14-III).



Honey Buzzard. Adult. Female: pattern of primary coverts (04-IX).



Honey Buzzard. 2nd year: pattern of primary coverts (14-III).



Honey Buzzard. Juvenile: pattern of primary coverts (26-X) (Photo: Vincent van der Spek / Turnstones.org).



Honey Buzzard. Adult. Male: pattern of primaries (14-III).



Honey Buzzard. Adult. Female: pattern of primaries (04-IX).



Honey Buzzard. 2nd year: pattern of primaries (14-III).

PICTURE NOT AVAILABLE

PICTURE NOT AVAILABLE

Honey Buzzard. Juvenile: pattern of primaries ().



Honey Buzzard. Adult. Male: pattern of secondaries (14-III).



Honey Buzzard. Adult. Female: pattern of secondaries (04-IX).



Honey Buzzard. 2nd year: pattern of secondaries (14-III).

PICTURE NOT AVAILABLE

PICTURE NOT AVAILABLE

Honey Buzzard. Juvenile: pattern of secondaries ().



Honey Buzzard. Adult. Male: pattern of wing (14-III).



Honey Buzzard. Adult. Female: pattern of wing (04-IX).



Honey Buzzard. 2nd year: pattern of wing (14-III).



Honey Buzzard. Juvenile: pattern of wing (26-X)
(Photo: Vincent van der Spek/Turnstones.org).