

01730 Common Shelduck (*Tadorna tadorna*)

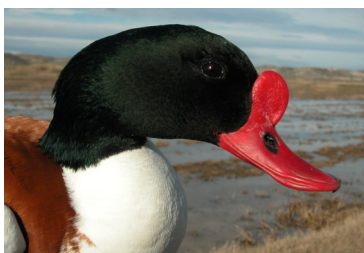


Shelduck. Spring. Adult. Male (10-III).

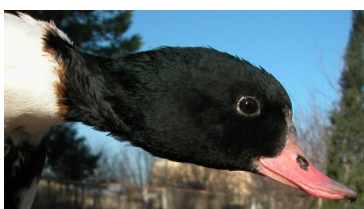
COMMON SHELDUCK (*Tadorna tadorna*)

IDENTIFICATION

58-67 cm. White plumage with dark green head, chestnut band on breast, two black lines on side of upperparts and one through the underparts; black wings with green speculum; tail with black tip; red bill.



Shelduck. Adult. Pattern of wing and head: top male; bottom female.



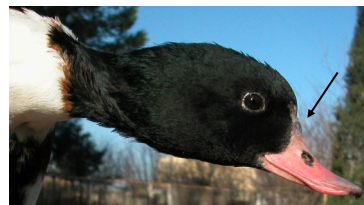
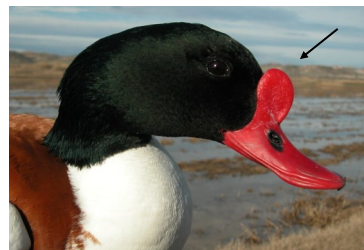
SIMILAR SPECIES

This species is unmistakable.

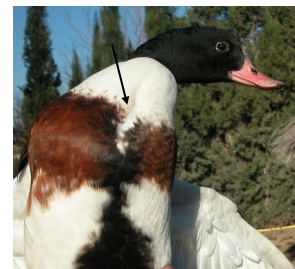
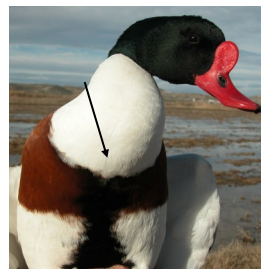
SEXING

Male in **breeding** plumage with bright red bill and fleshy knob at base; glossy green head and neck; broad and bright chestnut band on breast; undertail coverts cinnamon. In **non-breeding** plumage with dark mottled on breast and belly; knob reduced; outer web of the outermost tertial strongly chestnut. In any season **male** with wing longer than 316 mm. **Female** in **breeding** plumage with dull red bill, without knob at base; dull black on head and neck, with brown tinge on face and throat; undertail coverts pale, yellowish-brown. In **non-breeding** plumage with dark mottled only on side of breast; outer web of the outermost tertial pale chestnut brown, with a grey longitudinal stripe. In any season **female** with wing shorter than 312 mm.

CAUTION: some **1st year males** lack knob at base of bill, so absence of knob no guarantee that bird is **female**.

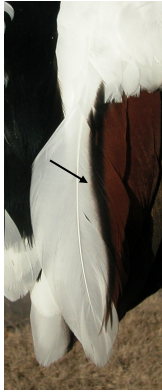


Shelduck. Sexing. Pattern of head and bill: top male; bottom female.



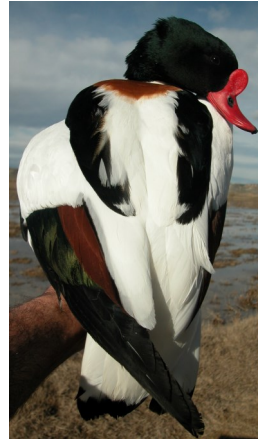
Shelduck. Sexing. Pattern of breast: left male; right female.

01730 Common Shelduck (*Tadorna tadorna*)



PICTURE NOT AVAILABLE

Shelduck. Sexing. Pattern of the innermost tertial: left male; right female.



PICTURE NOT AVAILABLE

AGEING

4 types of age can be recognized:

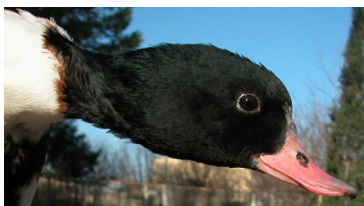
Juvenile with white tips on secondaries and all but 4 outermost primaries; grey greater coverts; dull and mottled plumage with whitish edges on feathers.

1st year autumn/2nd year spring acquiring adult-like plumage but have **juvenile** feathers on body; **juvenile worn** flight feathers retained.

2nd year autumn/3rd year spring in birds with some **juvenile** greater coverts retained, which have grey tips; sometimes with the trailing edge of secondaries white.

3rd year autumn/4th year spring only in birds with inner secondaries still with white tip and more rounded than **adult**.

Adult with black flight feathers but with a small white tip on secondaries; without **juvenile** feathers on wing or body.



PICTURE NOT AVAILABLE

Shelduck. Ageing. Pattern of head and bill: top adult female; bottom juvenile.



Shelduck. Ageing. Pattern of tips of secondaries: top adult; middle 4th year spring; bottom juvenile.

PICTURE NOT AVAILABLE

01730 Common Shelduck (*Tadorna tadorna*)

PICTURE NOT AVAILABLE

Shelduck. Ageing. Pattern of wing coverts: top adult; bottom juvenile.

MOULT

Complete **postbreeding** moult, acquiring eclipse plumage, usually finished late September. Partial **postjuvenile** moult confined to body feathers and retaining juvenile feathers on upperparts and scapulars; some birds moult tail feathers finishing in mid-winter. Both types of age have a partial **prebreeding** moult acquiring breeding plumage.

PHENOLOGY

I	II	III	IV	V	VI	VII	VIII	IX	X	XI	XII

■ Summer visitor ■ Resident
■ Wintering ■ On passage

PICTURE NOT AVAILABLE

Shelduck. Spring. Adult. Female ().

PICTURE NOT AVAILABLE

Shelduck. Spring. 4th year. Male ().



Shelduck. Spring. 4th year. Female (04-I).

PICTURE NOT AVAILABLE

Shelduck. Spring. 2nd year. Male ().

PICTURE NOT AVAILABLE

Shelduck. Spring. 2nd year. Female ().

PICTURE NOT AVAILABLE

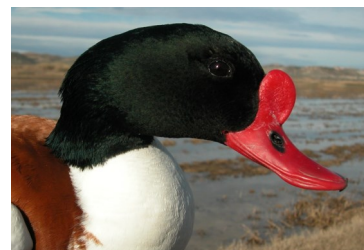
Shelduck. Spring. 2nd year. Female ().

PICTURE NOT AVAILABLE

Shelduck. Spring. Juvenile ().

PICTURE NOT AVAILABLE

Shelduck. Spring. 2nd year. Male ().



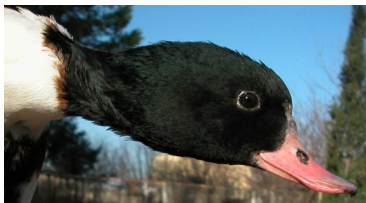
Shelduck.
Spring. Adult.
Pattern of head
and bill: top male
(10-III); bottom
female ().

PICTURE NOT AVAILABLE

01730 Common Shelduck (*Tadorna tadorna*)

PICTURE NOT AVAILABLE

Shelduck .
Spring. 4th year
Pattern of head
and bill: top male
(); bottom female
(04-I).



PICTURE NOT AVAILABLE

PICTURE NOT AVAILABLE

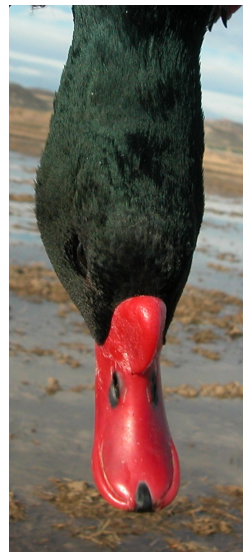
PICTURE NOT AVAILABLE

PICTURE NOT AVAILABLE

PICTURE NOT AVAILABLE

Shelduck .
Spring. Pattern
of head and bill:
top 3rd year
male (); middle
2nd year female
(); bottom juveni-
le ().

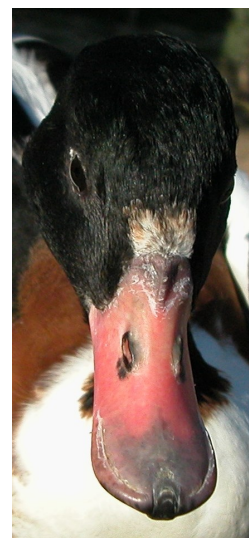
Shelduck .
Spring. Pattern
of head and bill:
top 2nd year
male (); middle
2nd year female
(); bottom juveni-



PICTURE NOT AVAILABLE

Shelduck. Spring. Adult. Bill pattern: left male (10-III);
right female ().

PICTURE NOT AVAILABLE



Shelduck. Spring. 4th year Bill pattern: left male ();
right female (04-I).

01730 Common Shelduck (*Tadorna tadorna*)

PICTURE NOT AVAILABLE

PICTURE NOT AVAILABLE

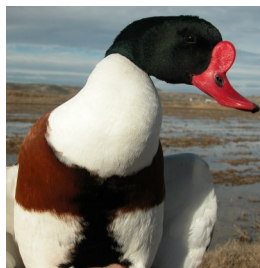
Shelduck. Spring. 3rd year Bill pattern: left male (); right female ().

PICTURE NOT AVAILABLE

PICTURE NOT AVAILABLE

PICTURE NOT AVAILABLE

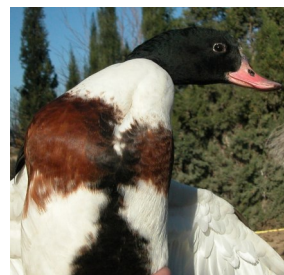
Shelduck .
Spring. Bill pattern: top left 2nd year male (); top right 2nd year female (); left juvenile ().



PICTURE NOT AVAILABLE

Shelduck. Spring. Adult. Breast pattern: left male (10-III); right female ().

PICTURE NOT AVAILABLE



Shelduck. Spring. 4th year. Breast pattern: left male (); right female (04-I).

PICTURE NOT AVAILABLE

PICTURE NOT AVAILABLE

Shelduck. Spring. 3rd year. Breast pattern: left male (); right female ().

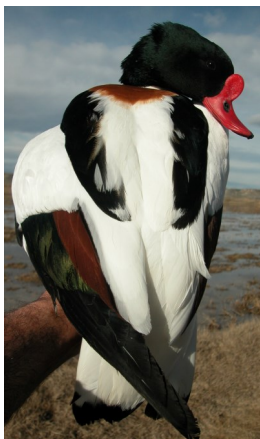
PICTURE NOT AVAILABLE

PICTURE NOT AVAILABLE

PICTURE NOT AVAILABLE

Shelduck. Spring. Breast pattern: top left 2nd year male (); top right 2nd year female (); left juvenile ().

01730 Common Shelduck (*Tadorna tadorna*)



PICTURE NOT AVAILABLE

Shelduck. Spring. Adult. Upperpart pattern: left male (10-III); right female ().

PICTURE NOT AVAILABLE



Shelduck. Spring. 4th year. Upperpart pattern: left male (); right female (04-I).

PICTURE NOT AVAILABLE

PICTURE NOT AVAILABLE

Shelduck. Spring. 3rd year. Upperpart pattern: left male (); right female ().

PICTURE NOT AVAILABLE

PICTURE NOT AVAILABLE

PICTURE NOT AVAILABLE

Shelduck. Spring. Upperpart pattern: top left 2nd year male (); top right 2nd year female (); left juvenile ().

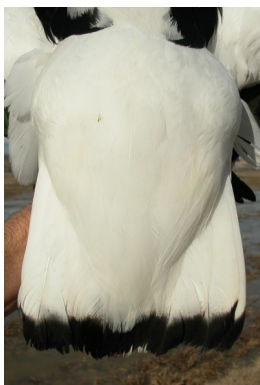


Shelduck. Spring. Pattern of legs: top male (10-III); middle female (04-I); bottom juvenile ().

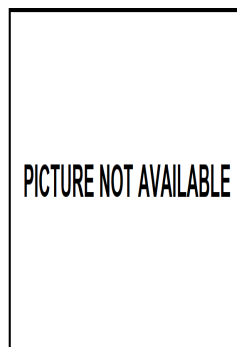


PICTURE NOT AVAILABLE

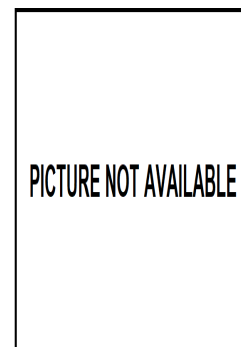
01730 Common Shelduck (*Tadorna tadorna*)



PICTURE NOT AVAILABLE

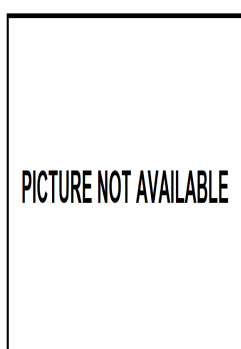


PICTURE NOT AVAILABLE

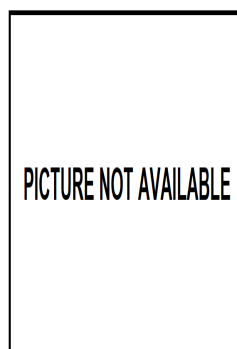


PICTURE NOT AVAILABLE

Shelduck. Spring. Adult. Tail pattern: left male (10-



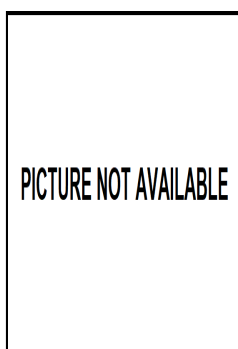
PICTURE NOT AVAILABLE



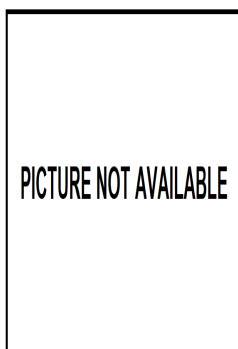
PICTURE NOT AVAILABLE

Shelduck. Spring. Tail pattern: top left 2nd year male (); top right 2nd year female (); left juvenile ().

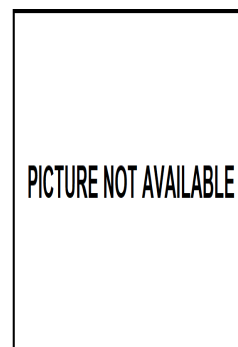
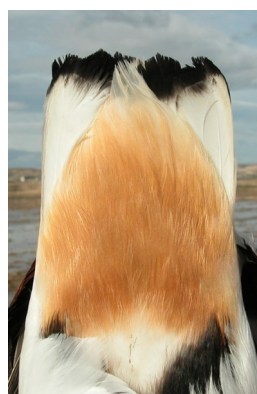
Shelduck. Spring. 4th year. Tail pattern: left male (); right female (04-I).



PICTURE NOT AVAILABLE

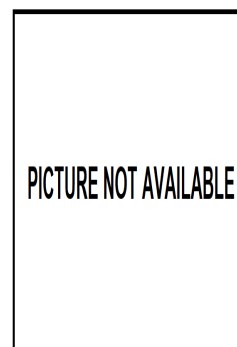


PICTURE NOT AVAILABLE



PICTURE NOT AVAILABLE

Shelduck. Spring. Adult. Pattern of undertail coverts: left male (10-III); right female ().



PICTURE NOT AVAILABLE

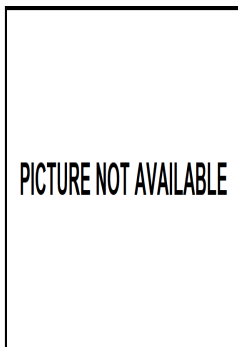
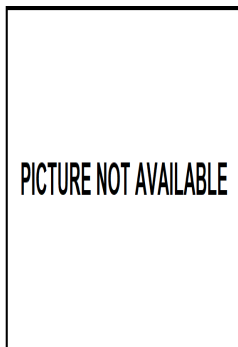


PICTURE NOT AVAILABLE

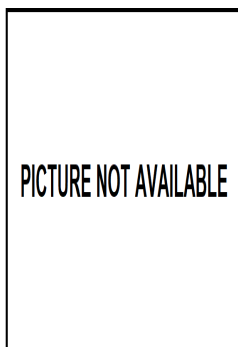
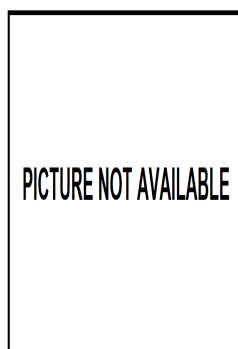
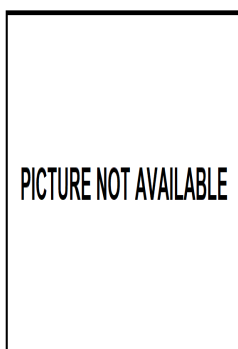
Shelduck. Spring. 3rd year. Tail pattern: left male (); right female ().

Shelduck. Spring. 4th year. Pattern of undertail coverts: left male (); right female ().

01730 Common Shelduck (*Tadorna tadorna*)



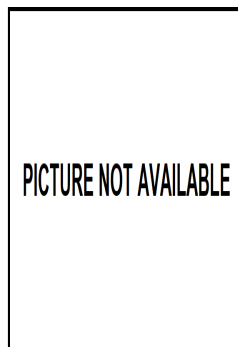
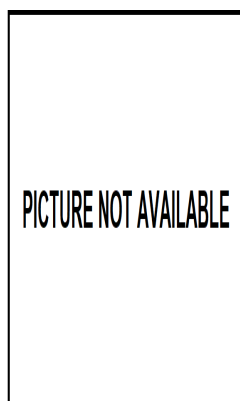
Shelduck. Spring. 3rd year. Pattern of undertail coverts: left male (); right female ().



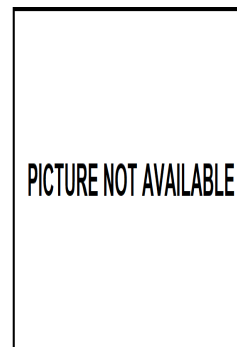
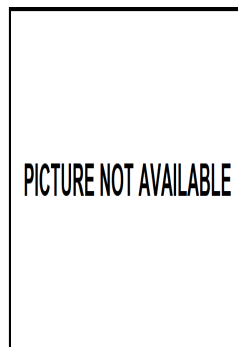
Shelduck. Spring. Pattern of undertail coverts: top left 2nd year male (); top right 2nd year female (); left juvenile ().



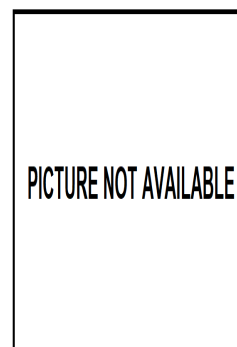
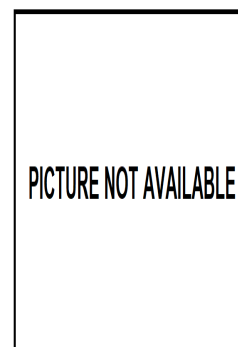
Shelduck. Spring. Adult. Pattern of tertials: left male (10-III); right female ().



Shelduck. Spring. 4th year. Pattern of tertials: left male (); right female (04-I).



Shelduck. Spring. 3rd year. Pattern of tertials: left male (); right female ().



Shelduck. Spring. Pattern of tertials: top left 2nd year male (); top right 2nd year female (); left juvenile ().

01730 Common Shelduck (*Tadorna tadorna*)



PICTURE NOT AVAILABLE

PICTURE NOT AVAILABLE

PICTURE NOT AVAILABLE

Shelduck. Spring. Adult. Pattern of the innermost tertial: left male (10-III); right female ().

PICTURE NOT AVAILABLE

PICTURE NOT AVAILABLE

PICTURE NOT AVAILABLE

Shelduck. Spring. Pattern of the innermost tertial: top left 2nd year male (); top right 2nd year female (); left juvenile ().

Shelduck. Spring. 4th year. Pattern of the innermost tertial: left male (); right female ().

PICTURE NOT AVAILABLE

PICTURE NOT AVAILABLE



Shelduck. Spring. Adult. Male: pattern of primaries (10-III).

Shelduck. Spring. 3rd year. Pattern of the innermost tertial: left male (); right female ().

PICTURE NOT AVAILABLE

Shelduck. Spring. Adult. Female: pattern of primaries ().

PICTURE NOT AVAILABLE

Shelduck. Spring. 4th year. Male: pattern of primaries ().



Shelduck. Spring. 4th year. Female: pattern of primaries (04-l).

PICTURE NOT AVAILABLE

Shelduck. Spring. 3rd year. Male: pattern of primaries ().

PICTURE NOT AVAILABLE

Shelduck. Spring. 3rd year. Female: pattern of primaries ().

PICTURE NOT AVAILABLE

Shelduck. Spring. 2nd year. Male: pattern of primaries ().

PICTURE NOT AVAILABLE

Shelduck. Spring. 2nd year. Female: pattern of primaries ().

PICTURE NOT AVAILABLE

Shelduck. Spring. Juvenile: pattern of primaries ().



Shelduck. Spring. Adult. Male: pattern of secondaries (10-III).

PICTURE NOT AVAILABLE

Shelduck. Spring. Adult. Female: pattern of secondaries ().

PICTURE NOT AVAILABLE

Shelduck. Spring. 4th year. Male: pattern of secondaries ().



Shelduck. Spring. 4th year. Female: pattern of secondaries (04-I).

PICTURE NOT AVAILABLE

Shelduck. Spring. 3rd year. Male: pattern of secondaries ().

PICTURE NOT AVAILABLE

Shelduck. Spring. 3rd year. Female: pattern of secondaries ().

PICTURE NOT AVAILABLE

Shelduck. Spring. 2nd year. Male: pattern of secondaries ().

PICTURE NOT AVAILABLE

Shelduck. Spring. 2nd year. Female: pattern of secondaries ().

PICTURE NOT AVAILABLE

Shelduck. Spring. Juvenile: pattern of secondaries ().



Shelduck. Spring. Adult. Male: pattern of wing (10-III).

PICTURE NOT AVAILABLE

PICTURE NOT AVAILABLE

Shelduck. Spring. Adult. Female: pattern of wing ().

PICTURE NOT AVAILABLE

PICTURE NOT AVAILABLE

Shelduck. Spring. 4th year. Male: pattern of wing ().



Shelduck. Spring. 4th. Female: pattern of wing (04-l).

PICTURE NOT AVAILABLE

PICTURE NOT AVAILABLE

Shelduck. Spring. 3rd year. Male: pattern of wing ().

PICTURE NOT AVAILABLE

PICTURE NOT AVAILABLE

Shelduck. Spring. 3rd year. Female: pattern of wing ().

PICTURE NOT AVAILABLE

PICTURE NOT AVAILABLE

Shelduck. Spring. 2nd year. Male: pattern of wing ().

PICTURE NOT AVAILABLE

PICTURE NOT AVAILABLE

Shelduck. Spring. 2nd year. Female: pattern of wing ().

PICTURE NOT AVAILABLE

PICTURE NOT AVAILABLE

Shelduck. Spring. Juvenile: pattern of wing ().